



| MARKET SUMMARY                |              |         |
|-------------------------------|--------------|---------|
| NEPSE                         | 1149.99      | +0.56%  |
| Total Turnover (Rs.)          | 352,810,750  | +32.33% |
| Share Volume                  | 1,265,662    | +33.14% |
| Total Transactions            | 6,085        | +5.33%  |
| Total Market Cap. (Rs. Mill)  | 1,405,210.80 | +0.54%  |
| Floated Market Cap (Rs. Mill) | 493,654.80   | +0.70%  |

|                         |        |
|-------------------------|--------|
| MARKET CAP TO GDP RATIO | 46.51% |
|-------------------------|--------|

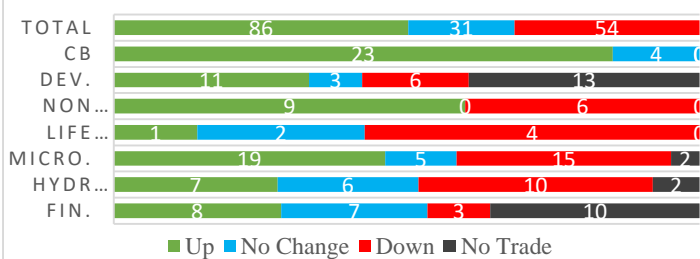
| WEIGHTAGE ON MARKET CAP      |        |
|------------------------------|--------|
| Commercial Banks             | 51.59% |
| Development Bank             | 5.15%  |
| Finance                      | 3.37%  |
| Microfinance                 | 6.10%  |
| Life Insurance               | 7.89%  |
| Non-life Insurance           | 6.48%  |
| Hydropower                   | 5.90%  |
| Hotel                        | 1.63%  |
| Manufacturing And Processing | 3.57%  |
| Trading                      | 0.11%  |
| Others                       | 8.21%  |
| NTC                          | 7.17%  |

|                             |                     |
|-----------------------------|---------------------|
| Top Gainers                 | NMFBS, AHPC, HPPL   |
| Top Losers                  | UPCL, KADBL, KMFL   |
| Top Stocks by Shares Traded | PRVU, MLBL, NICA    |
| Top Stocks by Transactions  | UPPER, ALBSL, SHIVM |
| Top Stocks by Turnover      | NICA, PRVU, NMB     |
| Top Brokers by Turnover     | 33, 44, 25          |

| NEPSE STATISTICS   |        |
|--------------------|--------|
| Average Return     | 16.22% |
| Standard Deviation | 17.23% |
| Standard Error     | 1.14%  |
| Skewness           | 0.46   |
| Kurtosis           | 3.43   |

Notes: NEPSE Index from 2069.04.01 – 2075.12.18. Avg. annual trade day's 229. Lognormal return is used. Skewness shows market is asymmetrically skewed to right, indicating average return of 16.22% more affected by outliers. Further excess kurtosis shows fat tail and more peaked distribution than normal.

### TRADED SCRIPTS STATS



### MARKET OVERVIEW

NEPSE closed green by gaining 6.43 points and closing at 1149.99 on Monday. The highest index reached throughout the day was 1152.37 while the lowest index reached was 1142.06. Turnover, share volume and total transaction all increased by 32.33%, 33.14% and 5.33% respectively. The trade of 171 scripts resulted in a total turnover of Rs.35.28crores. Sensitive, Float and Sensitive Float also reported a marginal gain of 1.45, 0.58 and 0.59 points respectively.

All the sectors closed green at the end of the day except Manu & Pro. and Others which reported a loss of 4.66, and 5.92 points respectively. However, Hotels followed by Non-life Insurance and Banking were the top gainers which gained by 33.67, 29.7 and 10.15 points respectively. Microfinance and Life Insurance reported a meagre gain of 2.28 and 2.2 points respectively.

KADBL, SLBS and DHPL underperformed the most as compared to its sector performance while NMFBS, AHPC and HPPL outperformed its respective sectors. BHBL, AHPC and KMFL are the most volatile stock traded throughout the day. JSLBB, NNLB and NIBLPF are trading closer to 52 weeks low while PRVU, NICA and UFL are trading near 52 weeks high.

UPCL hit negative circuit losing by 9.88% at the end of the trading day.

### MAJOR MARKET NEWS

- NEPSE lists bonus shares of Sindu Bikas Bank, Shangrila Development Bank and right shares of Lumbini Bikas Bank for trading.
- NRB is selling treasury bills worth NPR. 11.6 billion on Monday through auction.
- Jebils Finance has allotted 3.41 lakhs units of promoter shares through auction.
- ALICL has conducted its AGM on 25<sup>th</sup> Chaitra, 2075. The main agenda of the AGM was to issue 60% right shares to its shareholders
- MLBBL is conducting its AGM on 23<sup>rd</sup> Chaitra, 2075. The main agenda of the AGM is to issue 10.45% bonus shares to its shareholders
- Almost 70% of the IPO issue of Union Hydropower Company Limited is subscribed.



- SMB has conducted its AGM on 23<sup>rd</sup> Chaitra, 2075. The main agenda of the AGM was to issue 66.66% right shares to its shareholders.

### Major Events (Today)

- Union Hydropower Company Limited is issuing 3,534,340 units IPO shares to general public.
- Sanima Bank Limited calls to place the bids for 2,718,835 units of promoter shares.
- Right Share Issue open for 100% and 65% of MERO, and NICL respectively.

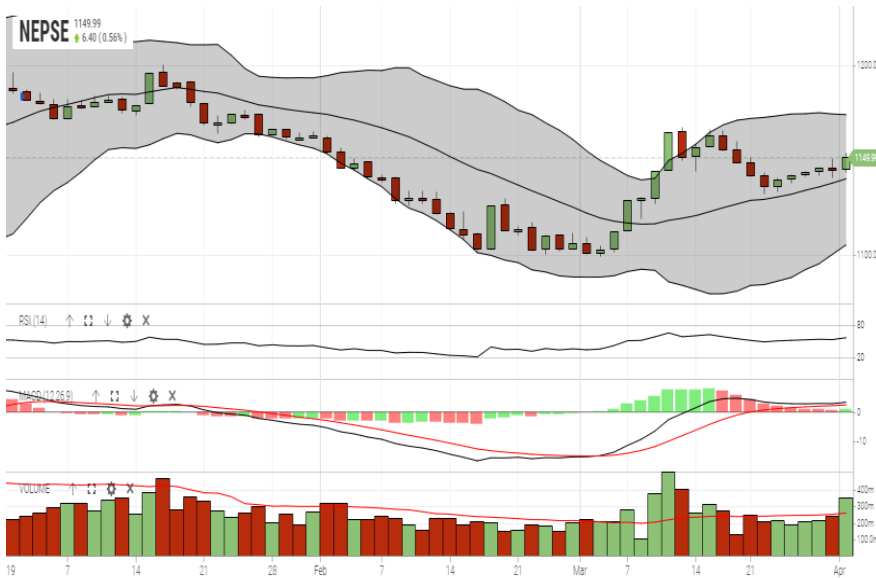
| GLOBAL INDICES |           |         |
|----------------|-----------|---------|
| SENSEX         | 38,871.87 | +198.96 |
| NIFTY          | 11,669.15 | +45.25  |
| S&P 500        | 2,834.40  | +18.96  |
| DJIA           | 25,928.68 | +211.22 |
| NIKKEI 225     | 21,509.03 | +303.22 |

|               | Scrip Name                         | Ticker | LTP    |
|---------------|------------------------------------|--------|--------|
| UNDER PRICED  | Agriculture Development Bank Ltd.  | ADBL   | 297.00 |
|               | Nepal Bank Ltd.                    | NBL    | 291.00 |
|               | Bank of Kathmandu Ltd.             | BOKL   | 243.00 |
|               | Mega Bank Nepal Ltd.               | MEGA   | 162.00 |
|               | Laxmi Bank Limited                 | LBL    | 196.00 |
| FAIRLY PRICED | Century Commercial Bank Ltd.       | CCBL   | 165.00 |
|               | Global IME Bank Limited            | GBIME  | 264.00 |
|               | Citizen Bank International Limited | CZBIL  | 212.00 |
|               | Civil Bank Limited                 | CBL    | 156.00 |
|               | Sunrise Bank Limited               | SRBL   | 225.00 |
| OVER PRICED   | Everest Bank Limited               | EBL    | 573.00 |
|               | Standard Chartered Bank Limited    | SCB    | 567.00 |
|               | Nepal SBI Bank Limited             | SBI    | 392.00 |
|               | Nepal Investment Bank Ltd.         | NIB    | 529.00 |
|               | NIC Asia Bank Limited              | NICA   | 410.00 |

**Notes:** # Above pricing is performed by averaging the prices derived as per P/E, P/B and 180 days closing averages. Based on Published Q2 75/76 data.

# Harmonic Mean of industries is carried for Pricings.

### NEPSE TECHNICAL OUTLOOKS



Indicators used: Bollinger Bands, MACD, RSI, Moving Average (20 days) Volume

|  |             |
|--|-------------|
| Date / Time  | 18.12.2075  |
| Close  | 1,149.99    |
| Open   | 1,143.73    |
| High   | 1,152.37    |
| Low  | 1,142.06    |
| Turnover   | 352,810,750 |
| Bollinger Bands Top Bollinger Bands (20,2,ma,y)    | 1,173.05    |
| Bollinger Bands Median Bollinger Bands (20,2,ma,y) | 1,139.07    |
| Bollinger Bands Bottom Bollinger Bands (20,2,ma,y) | 1,105.08    |
| RSI (14)   | 57          |
| MA (20, Volume, ma, 0)                             | 260m        |
| MACD (12,26,9)                                     | 3           |
| Signal macd (12,26,9)                              | 2           |
| macd (12,26,9)_hist                                | 1           |



*Disclaimers: This MARKET SUMM is prepared to timely update the market participants about the Nepalese stock market before the Market opens for the day. The information and data herein should not be construed as an investment advice or recommendation. Should the investors choose to act based on this report, it shall be entirely at their own risk and KCL Astute shall not be liable, for any loss or damages incurred thereby. Unless otherwise specifically stated, the above data concerns the previous trading day.*

### KCL Astute Capital Limited

Address: Sundar Bhawan, Hattisar, Kathmandu  
 Contact No. 977-1-4429149 | 4429150, Email: [info@kclastute.com](mailto:info@kclastute.com)