



NEPSE Index - Tuesday



MARKET SUMMARY

NEPSE	1,259.37	+0.27%
Total Turnover (Rs.)	294,305,023	-16.11%
Share Volume	1,013,794	-16.10%
Total Transactions	5,142	-9.41%
Total Market Cap. (Rs. Mill)	1,568,788.04	+0.32%
Floated Market Cap (Rs. Mill)	560,137.90	+0.31%

MARKET CAP TO GDP RATIO **52.16%** ▲

WEIGHTAGE ON MARKET CAP

Commercial Banks	53.38%
Development Bank	5.17%
Finance	2.92%
Microfinance	6.18%
Life Insurance	7.20%
Non-life Insurance	5.59%
Hydropower	5.84%
Hotel	1.75%
Manufacturing And Processing	4.12%
Trading	0.09%
Others	7.75%
NTC	6.65%

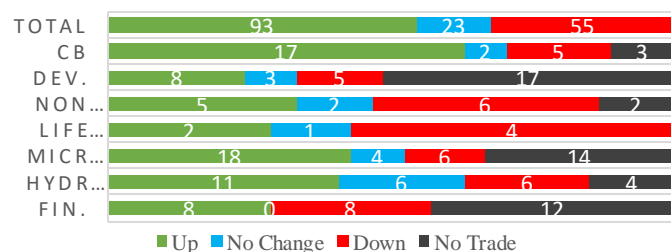
Top Gainers	UIC, NNLB, NAGRO
Top Losers	UNHPL, MPFL, SIL
Top Stocks by Shares Traded	SBLPO, PRVU, NBL
Top Stocks by Transactions	ILBS, PRVU, UPPER
Top Stocks by Turnover	SBLPO, NBL, PRVU
Top Brokers by Transactions	4, 59, 17

NEPSE STATISTICS

Average Return	16.65%
Standard Deviation	16.99%
Skewness	0.46
Kurtosis	3.49

Notes: NEPSE Index from 2069.04.01 – 2076.04.14. Avg. annualtradeday's229. Lognormal return is used. Skewness shows market is asymmetrically skewed to right, indicating average return of 16.65% more affected by outliers. Further excess kurtosis shows fat tail and more peaked distribution than normal.

TRADED SCRIPTS STATS



MAJOR MARKET NEWS

- 📌 NEPSE posted gain of 3.39 points, closed at 1259.37.
- 📌 Sensitive, Float and Sensitive Float Index rose by 1.03, 0.24 and 0.29 points respectively.
- 📌 NEPSE has listed 1,393,524.19 units Bonus Shares of Deva Bikas Bank Ltd.
- 📌 NEPSE has listed 262,516 units Bonus Shares of Purnima Bikas Bank Ltd.
- 📌 NEPSE has listed 850,000 units Bonus Shares of Miteri Development Bank Ltd.
- 📌 Adjusted Price of UIC (329) for 240% right shares is set at Rs. 299.12
- 📌 MERO (529) Q4 75/76 Net Profit increased by 76.94% to Rs.16.76 crores; EPS Rs.25.48; BVPS Rs.126.07.
- 📌 RMDC (677) Q4 75/76 Net Profit increased by 29.07% to Rs. 33.24 crores; EPS Rs.41.59; BVPS Rs.302.08
- 📌 GBIME (295) Q4 75/76 Net Profit increased by 33.02% to Rs. 2.79 arba; EPS Rs.27.11; BVPS Rs.158.62
- 📌 SBI (470) Q4 75/76 Net Profit increased by 13.84% to Rs. 2.30 arba; EPS Rs.27.26; BVPS Rs.167.69
- 📌 Sanima Equity Fund (SAEF) (9.73) Asad end NAV fell to Rs.11.03 (1.08% down)
- 📌 NIC Asia Growth Fund (NICGF) (9.90) Asad end NAV increased to Rs.11.18 from Rs.11.15;

Major Events (Today)

- 📌 Book Closure Date for 14th AGM of SICL; Special Agenda: Issuance of 30% right shares.
- 📌 Book Closure Date for 14th AGM of LGIL; Special Agenda: Issuance of 20% right shares.
- 📌 **NFO Alert:** NMB 50 worth Rs.1.20 billion (120 million units at Rs.10 each) open till 16th Shrawan;
- 📌 **NFO Alert:** NIC ASIA Balance Fund worth Rs.1.25 billion (125 million units at Rs.10 each) extended till 5th Bhadra.
- 📌 **IPO Alert:** 7,672,210 units IPO Issue of Himad Dolakha Hydropower Company Ltd.
- 📌 **Auction Alert:** 377,457.5 units promoter shares of SWBBL to be sold via auction till 29th Shrawan.
- 📌 **Auction Alert:** 392,393 units promoter shares and 190,451 units ordinary shares of GBLBS to be sold via auction till 15th Shrawan.

New Fund Offerings (Upcoming)

	Schemes	Units	@ Rs.	Open
1	Siddhartha Investment Growth Scheme-2	140 mil.	10	23/4/76

Fundamental Watch: Quarter 4 2075/76 Unaudited Reports

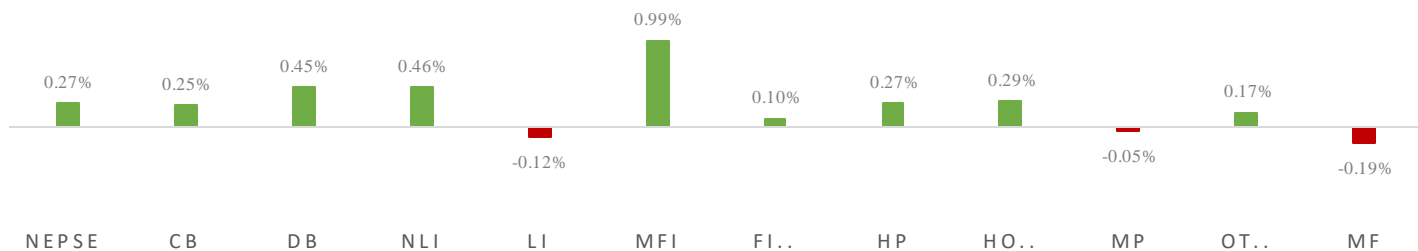


MARKET SUMM...



15th Asadh, 2076 Wednesday

INDICES % CHANGE



Volatile Stock

SPARS	(547)	11.63%
SLBSL	(639)	11.13%
SMFBS	(597)	9.74%

Stock Movement

ILBS	(461)	Highest till now
GMFBS	(554)	Lowest till now
DHPL	(64)	Lowest till now

Highest Volume – Day 3 (Week 3)

PRVU	(274)	214,678 units
CBL	(155)	145,587 units
MEGA	(209)	129,093 units

Sectorial Outlooks

Bullish

Life Insurance
Non-Life Insurance

Bearish

Hotels
Mutual Funds

Stock Pick...

Up Pick

UIC
SHVM

Down Pick

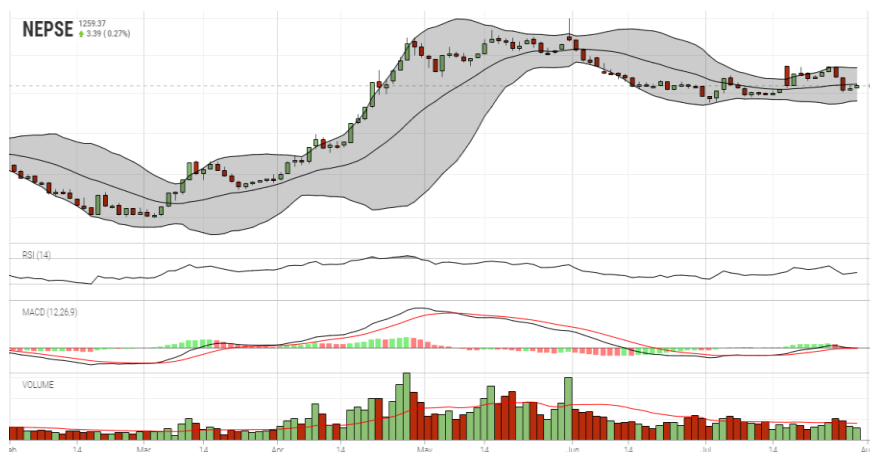
MPFL
PICL

Financial Metrics

S.N.	Ticker	LTP	EPS	BVPS	P/E	P/B	ROE	NPL	CAR	Remarks
1	GMFBS	554	29.45	116.57	18.81	4.75	34.66%	0.69%	14.11%	-
2	LLBS	721	45.84	201.11	15.73	3.59	25.61%	1.26%	13.31%	-
3	SANIMA	357	28.04	148.73	12.73	2.40	19.85%	0.08%	13.11%	-
4	NMFBS	1486	87.12	259.86	17.06	5.72	39.48%	1.43%	11.11%	-
5	SMATA	1268	42.32	238.87	29.96	5.31	25.21%	0.98%	10.17%	-

Note: If asterisk sign (*) financial metrics denotes Quarter 3 75/76 data, otherwise financial metrics are of Quarter 4 75/76 data.

NEPSE TECHNICAL OUTLOOKS



Date / Time	14.04.2076
Close	1259.37
Open	1256.02
High	1262.17
Low	1256.02
Bollinger Bands Top (20,2,ma,y)	1283.01
Bollinger Bands Median (20,2,ma,y)	1261.51
Bollinger Bands Bottom (20,2,ma,y)	1240.01
RSI (14)	47
MA (35), ma, 0)	396M
MACD (12,26,9)	0
Signal macd (12,26,9)	-0
macd (12,26,9)_hist	0

Indicators used: Bollinger Bands, MACD, RSI, Moving Average (35 days) Volume

Global Indices

SENSEX	37,397.24 (-0.77%)	NIFTY	11,085.40 (-0.93%)	S&P 500	3,020.97 (-0.16%)	DJIA	27,221.35 (+0.11%)	NIKKEI 225	21,709.31 (+0.43%)
--------	--------------------	-------	--------------------	---------	-------------------	------	--------------------	------------	--------------------



Disclaimers: This MARKET SUMM is prepared to timely update the market participants about the Nepalese stock market before the Market opens for the day. The information and data herein should not be construed as an investment advice or recommendation. Should the investors choose to act based on this report, it shall be entirely at their own risk and KCL Astute shall not be liable, for any loss or damages incurred thereby. Unless otherwise specifically stated, the above data concerns the previous trading day.

KCL Astute Capital Limited

Address: Sundar Bhawan, Hattisar, Kathmandu

Contact No. 977-1-4429149 | 4429150,

Email: info@kclastute.com