



MARKET SUMMARY		
NEPSE	1,144.53	+0.17%
Total Turnover (Rs.)	251,596,524	-48.30%
Share Volume	989,177	-55.58%
Total Transactions	5,712	+4.41%
Total Market Cap. (Rs. Mill)	1,398,783.64	+0.17%
Floated Market Cap (Rs. Mill)	490,477.12	+0.09%

MARKET CAP TO GDP RATIO	46.51%	▲
-------------------------	--------	---

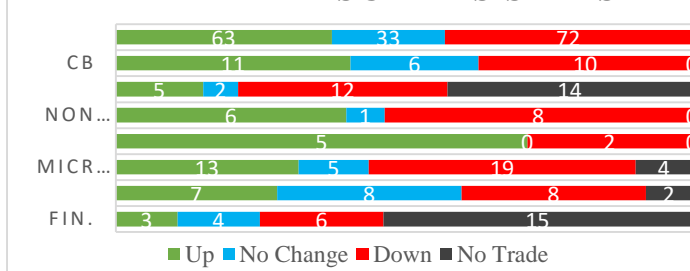
WEIGHTAGE ON MARKET CAP	
Commercial Banks	51.26%
Development Bank	5.15%
Finance	3.39%
Microfinance	6.14%
Life Insurance	7.99%
Non-life Insurance	6.53%
Hydropower	5.97%
Hotel	1.61%
Manufacturing And Processing	3.56%
Trading	0.11%
Others	8.28%
NTC	7.26%

Top Gainers	CLBSL, FOWAD, LVF1
Top Losers	UPCL, SLBBLP, SPDL
Top Stocks by Shares Traded	SHIVM, PRVU, BOKL
Top Stocks by Transactions	SHIVM, UPPER, ALBSL
Top Stocks by Turnover	SHIVM, PRVU, NLIC
Top Brokers by Turnover	58, 49, 44

NEPSE STATISTICS	
Average Return	16.17%
Standard Deviation	17.24%
Standard Error	1.14%
Skewness	0.46
Kurtosis	3.43

Notes: NEPSE Index from 2069.04.01 – 2075.12.14. Avg. annual trade day's 229. Lognormal return is used. Skewness shows market is asymmetrically skewed to right, indicating average return of 16.17% more affected by outliers. Further excess kurtosis shows fat tail and more peaked distribution than normal.

TRADED SCRIPTS STATS



MARKET OVERVIEW

NEPSE continued its meagre gain in the index points by 2.01, closing at 1144.53 on Thursday. The highest index reached throughout the day was 1144.60 while the lowest index reached was 1140.11. Turnover, and share volume decreased by 48.30% and 55.58% respectively. The trade of 168 scripts resulted in a total turnover of Rs.25.16 crores. Sensitive, Float and Sensitive Float also reported a marginal gain of 0.32, 0.08 and 0.05 points respectively.

All the sectors closed green at the end of the day except Hotels, Development Bank, Finance and Hydropower which reported a loss of 14.04, 3, 0.13 and 0.06 points respectively. However, Life Insurance, Non-life Insurance and Manu & Pro were the top gainers which gained by 26.98, 18.2 and 4.46 respectively. Banking and Microfinance gained by 1.38 and 2.52 points respectively.

NSEWA, KMCDB and API underperformed the most as compared to its sector performance while NHDL, CLBSL, and AKPL outperformed its respective sectors. NHDL, SHIVM and NSEWA is the most volatile stock traded throughout the day. NIBLPF, NNLB and NIBSF1 are trading closer to 52 weeks low while PRVU, ALBSL, and NICA are trading near 52 weeks high.

UPCL and SLBBLP hit negative circuit losing by 9.59% and 9.19% at the end of the trading day.

Investors Pressure Group has halted the protest till the Investment Summit. The protest was addressed for the 32 points demand that was not yet fulfilled.

MAJOR MARKET NEWS

- IPO of Trishuli Jalbidhyut Company Limited successfully allotted. Issue was oversubscribed by 18.61 times.
- GBLBS is issuing 50% right shares for its shareholders. The book closure for the same is 29th Chaitra, 2075.
- NEPSE urges investors to take PAN numbers if they plan to trade shares with a transaction of Rs. 5 lakhs or above. The Pan will be made compulsory for investors from 1st Baisakh, 2076.
- NLICL is calling AGM on 15th Chaitra, 2075. The main agenda of the AGM is to issue 13.5% bonus shares to its shareholders.



Major Events (Today)

- Union Hydropower Company Limited is issuing 3,534,340 units IPO shares to general public.
- AGM of ADBL today; agenda: 15.053% bonus shares and 6% cash dividend to its shareholders.
- Book Closure for the 6th AGM of GRDBL today.
- Sanima Bank Limited calls to place the bids for 2,718,835 units of promoter shares.
- Right Share Issue open for 20%, 100% and 65% of UMB, MERO, and NICL respectively.

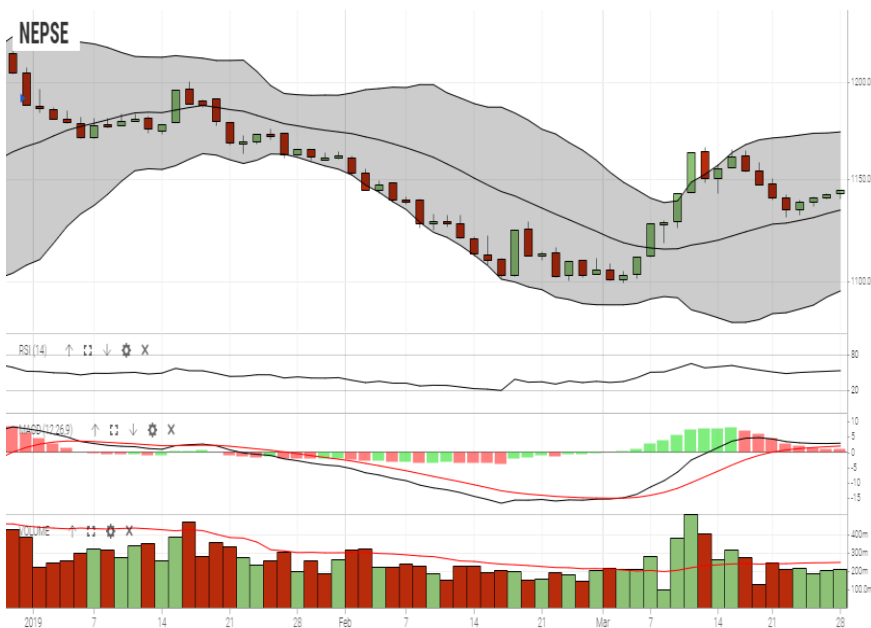
GLOBAL INDICES		
SENSEX	38,132.88	-100.53
NIFTY	11,445.05	-38.20
S&P 500	2,798.04	-20.42
DJIA	25,512.84	-144.89
NIKKEI 225	21,378.73	-49.66

	Scrip Name	Ticker	LTP
UNDER PRICED	Agriculture Development Bank Ltd.	ADBL	294.00
	Nepal Bank Ltd.	NBL	289.00
	Bank of Kathmandu Ltd.	BOKL	241.00
	Laxmi Bank Limited	LBL	192.00
	Mega Bank Nepal Ltd.	MEGA	161.00
FAIRLY PRICED	Sunrise Bank Limited	SRBL	216.00
	Century Commercial Bank Ltd.	CCBL	163.00
	Global IME Bank Limited	GBIME	261.00
	Citizen Bank International Limited	CZBIL	209.00
	Civil Bank Limited	CBL	155.00
OVER PRICED	Standard Chartered Bank Limited	SCB	568.00
	Everest Bank Limited	EBL	558.00
	Nepal SBI Bank Limited	SBI	391.00
	Nepal Investment Bank Ltd.	NIB	530.00
	Himalayan Bank Limited	HBL	460.00

Notes: # Above pricing is performed by averaging the prices derived as per P/E, P/B and 180 days closing averages. Based on Published Q2 75/76 data.

Harmonic Mean of industries is carried for Pricings.

NEPSE TECHNICAL OUTLOOKS



Indicators used: Bollinger Bands, MACD, RSI, Moving Average (20 days) Volume

Date / Time	14.12.2075
Close	1,144.51
Open	1,1442.54
High	1,144.60
Low	1,140.11
Turnover	251,596,524
Bollinger Bands Top Bollinger Bands (20,2,ma,y)	1,174.10
Bollinger Bands Median Bollinger Bands (20,2,ma,y)	1,134.79
Bollinger Bands Bottom Bollinger Bands (20,2,ma,y)	1,095.48
RSI (14)	54
MA (20, Volume, ma, 0)	250m
MACD (12,26,9)	3
Signal macd (12,26,9)	2
macd (12,26,9)_hist	1



Disclaimers: This MARKET SUMM is prepared to timely update the market participants about the Nepalese stock market before the Market opens for the day. The information and data herein should not be construed as an investment advice or recommendation. Should the investors choose to act based on this report, it shall be entirely at their own risk and KCL Astute shall not be liable, for any loss or damages incurred thereby. Unless otherwise specifically stated, the above data concerns the previous trading day.

KCL Astute Capital Limited

Address: Sundar Bhawan, Hattisar, Kathmandu

Contact No. 977-1-4429149 | 4429150, Email: info@kclastute.com