



NEPSE Index - Thursday



MARKET SUMMARY

NEPSE	1,263.84	-0.14%
Total Turnover (Rs.)	590,588,239	+65.04%
Share Volume	2,060,678	+63.34%
Total Transactions	8,453	+34.17%
Total Market Cap. (Rs. Mill)	1,574,284.82	-0.14%
Floated Market Cap (Rs. Mill)	561,899.39	-0.17%

MARKET CAP TO GDP RATIO 52.34% ▼

WEIGHTAGE ON MARKET CAP

Commercial Banks	53.11%
Development Bank	5.15%
Finance	2.91%
Microfinance	6.45%
Life Insurance	7.26%
Non-life Insurance	5.63%
Hydropower	5.81%
Hotel	1.74%
Manufacturing And Processing	4.12%
Trading	0.09%
Others	7.72%
NTC	6.61%

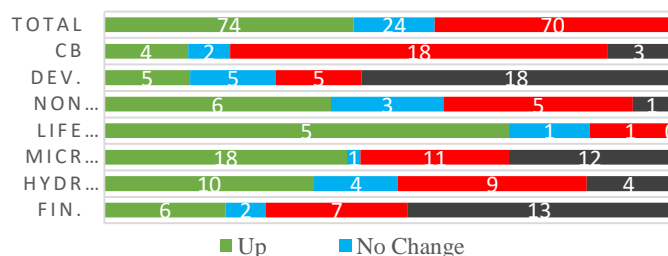
Top Gainers	SPARS, GLBSL, GBLBS
Top Losers	UIC, PFL, IGI
Top Stocks by Shares Traded	NILPO, GBLBS, PRVU
Top Stocks by Transactions	GBLBS, ILBS, ALBSL
Top Stocks by Turnover	NILPO, GBLBS, MNBBL
Top Brokers by Transactions	34, 17, 44

NEPSE STATISTICS

Average Return	16.68%
Standard Deviation	16.98%
Skewness	0.46
Kurtosis	3.50

Notes: NEPSE Index from 2069.04.01 – 2076.04.16. Avg. annual trade day's 229. Lognormal return is used. Skewness shows market is asymmetrically skewed to right, indicating average return of 16.68% more affected by outliers. Further excess kurtosis shows fat tail and more peaked distribution than normal.

TRADED SCRIPTS STATS



MAJOR MARKET NEWS

- NEPSE reported a meagre fall of 1.74 points closing at 1263.84.
- Sensitive, Float and Sensitive Float Index fell by 0.71, 0.16 and 0.25 points respectively.
- Microfinance Indices gained the most, rising by 1.01% ; many MFIs scripts hit the positive circuit on the day.
- EBL(664) Q4 75/76 y-o-y Net profit rose by 17.99% to Rs.3.05 arba; EPS Rs.37.95 BVPS Rs.218.69
- MSLB (1005) Q4 75/76 y-o-y Net profit rose by 77.53% to Rs.4.29 crores; EPS Rs.42.10 BVPS Rs.289.41
- SLBS (793) Q4 75/76 y-o-y Net profit rose by 87% to Rs.3.62 crores; EPS Rs.33.51 BVPS Rs.173.75
- NBBL (588) Q4 75/76 y-o-y Net profit rose by 47.18% to Rs.3.55 crores; EPS Rs.21.19 BVPS Rs.172
- KMFL (830) Q4 75/76 y-o-y Net profit rose by 81.47% to Rs 2.21 crores; EPS Rs.25.70 BVPS Rs.141.88
- RSDC (392) Q4 75/76 y-o-y Net profit rose by 71.22% to Rs 6.42 crores; EPS Rs.10.13 BVPS Rs.126.71
- SLBBL (520) Q4 75/76 y-o-y Net profit rose by 120.69% to Rs 8.07 crores; EPS Rs.29.96 BVPS Rs.146.46
- Laxmi Value Fund (LVF1) has announced 15% cash dividend to its shareholders. NAV of the same is reported at Rs. 11.58.
- Nepal Insurance Company Limited (NICL) is inviting its shareholders to attend the 70th AGM on 8th Bhadra, 2076.
- 100% right shares issuance of HIDCL received below average rating of IPO Grade 4+ from ICRA Nepal.
- NRB has sent out a letter to all commercial banks demanding the description of cross holdings in the Bank.

Major Events (Today)

- NFO Alert:** NMB 50 worth Rs.1.20 billion (120 million units at Rs.10 each). *Issue date extended.*
- NFO Alert:** NIC ASIA Balance Fund worth Rs.1.25 billion (125 million units at Rs.10 each). *Extended*
- IPO Alert:** 7,672,210 units IPO Issue of Himlal Dolakha Hydropower Company Ltd.
- Auction Alert:** 377,457.5 units promoter shares of SWBBL to be sold via auction till 29th Shrawan.

New Fund Offerings (Upcoming)

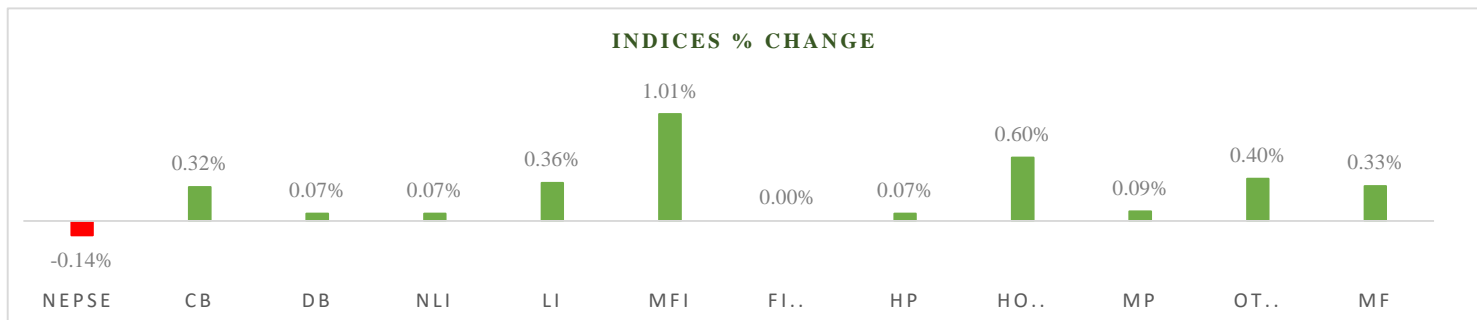
Schemes	Units	@ Rs.	Open
1 Siddhartha Investment Growth Scheme-2	140 mil.	10	23/4/76

Fundamental Watch: Quarter 4 2075/76 Unaudited Reports



MARKET SUMM...

19th Asadh, 2076 Sunday



Volatile Stock

GMFBS	(633)	13.6%
NSEWA	(510)	13.2%
ILBS	(533)	11.53%

Stock Movement

SPARS	(660)	Highest till now
SEF	(10.05)	Highest till now
UPCL	(87)	Lowest till now

Highest Volume – Day 5 (Week 3)

PRVU	(274)	329,990 units
CBL	(155)	256,912 units
NBL	(339)	243,283 units

Sectorial Outlooks

Bullish	Bearish
Life Insurance	Mutual Fund
Non-Life Insurance	Finance

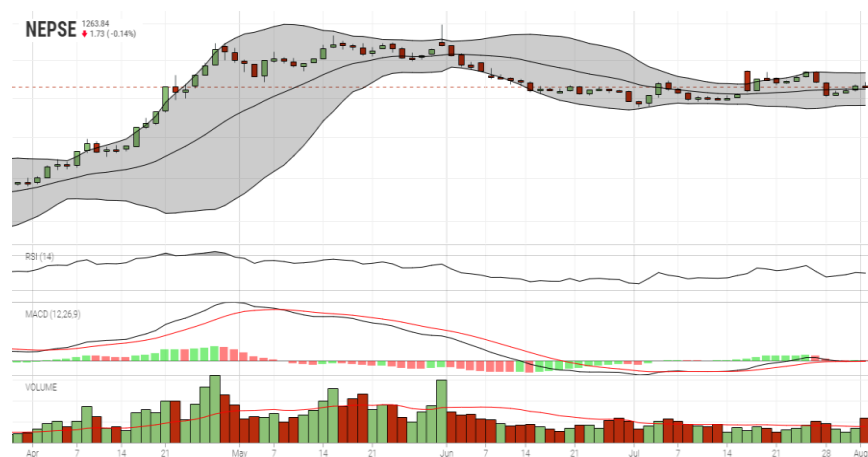
Stock Pick...

Up Pick	Down Pick
PRIN	MPFL
NLG	SFFIL

Financial Metrics										
S.N.	Ticker	LTP	EPS	BVPS	P/E	P/B	ROE	NPL	CAR	Remarks
1	KMCDB	699	19.25	162.69	36.31	4.30	12.46	1.60%	8.49%	Trade halted; M&A - JLBS
2	GMFBS	633	29.45	116.57	21.49	5.43	34.66%	0.69%	14.11%	
3	LLBS	815	45.84	201.11	17.78	4.05	25.61%	1.26%	13.31%	-
4	HATH	114	8.28	74.42	13.77	1.53	11.18%	2.46%	40.88%	Trade halted; M&A - GBIME
5	SMATA	1336	42.32	238.87	31.57	5.59	25.21%	0.98%	10.17%	-

Note: If asterisk sign (*) financial metrics denotes Quarter 3 75/76 data, otherwise financial metrics are of Quarter 4 75/76 data.

NEPSE TECHNICAL OUTLOOKS



Date / Time	16.04.2076
Close	1263.84
Open	1265.53
High	1270.89
Low	1262.55
Bollinger Bands Top (20,2,ma,y)	1282.88
Bollinger Bands Median (20,2,ma,y)	1261.52
Bollinger Bands Bottom (20,2,ma,y)	1240.17
RSI (14)	50
MA (35), ma, 0)	1259.75
MACD (12,26,9)	-0
Signal macd (12,26,9)	-0
macd (12,26,9)_hist	0

Indicators used: Bollinger Bands, MACD, RSI, Moving Average (35 days) Volume

Global Indices	SENSEX	NIFTY	S&P 500	DJIA	NIKKEI 225
	37,018.32 (-1.23%)	10,980.00 (-1.24%)	2980.38 (-1.09%)	26,864.27 (-1.23%)	21,540.99 (+0.09%)



Disclaimers: This MARKET SUMM is prepared to timely update the market participants about the Nepalese stock market before the Market opens for the day. The information and data herein should not be construed as an investment advice or recommendation. Should the investors choose to act based on this report, it shall be entirely at their own risk and KCL Astute shall not be liable, for any loss or damages incurred thereby. Unless otherwise specifically stated, the above data concerns the previous trading day.

KCL Astute Capital Limited

Address: Sundar Bhawan, Hattisar, Kathmandu

Contact No. 977-1-4429149 | 4429150,

Email: info@kclastute.com