



MARKET SUMMARY		
NEPSE	1,165.84	+0.20%
Total Turnover (Rs.)	545,818,619	+8.97%
Share Volume	2,029,015	+7.18%
Total Transactions	7,202	-7.95%
Total Market Cap. (Rs. Mill)	1424,867.12	+0.19%
Floated Market Cap (Rs. Mill)	501,554.23	+0.30%

MARKET CAP TO GDP RATIO	47.38%	▲
-------------------------	--------	---

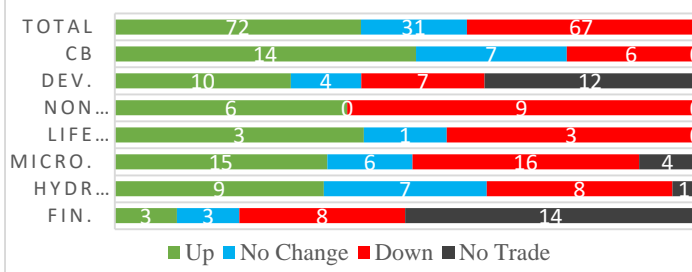
WEIGHTAGE ON MARKET CAP	
Commercial Banks	52.15%
Development Bank	5.12%
Finance	3.30%
Microfinance	6.02%
Life Insurance	7.84%
Non-life Insurance	6.38%
Hydropower	5.76%
Hotel	1.61%
Manufacturing And Processing	3.52%
Trading	0.11%
Others	8.19%
NTC	7.13%

Top Gainers	NICL, KNBL, LEMF
Top Losers	UPCL, SINDU, GHIL
Top Stocks by Shares Traded	NCCB, CBL, NICA
Top Stocks by Transactions	UPPER, NICA, NCCB
Top Stocks by Turnover	NICA, NCCB, NBL
Top Brokers by Turnover	59, 49, 44

NEPSE STATISTICS	
Average Return	16.41%
Standard Deviation	17.23%
Standard Error	1.14%
Skewness	0.45
Kurtosis	3.43

Notes: NEPSE Index from 2069.04.01 – 2075.12.20. Avg. annual trade day's 229. Lognormal return is used. Skewness shows market is asymmetrically skewed to right, indicating average return of 16.41% more affected by outliers. Further excess kurtosis shows fat tail and more peaked distribution than normal.

TRADED SCRIPTS STATS



MARKET OVERVIEW

NEPSE closed green by gaining a marginal 2.01 points and closing at 1,165.84 on Wednesday. The market experienced gain for 3 consecutive trading days. The highest index reached throughout the day was 1172.40 while the lowest index reached was 1158.72. Turnover, and share volume both increased by 8.97% and 7.18% respectively. The trade of 170 scripts resulted in a total turnover of Rs. 54.58 crores. Sensitive, Float and Sensitive Float also reported a gain of 0.57, 0.24 and 0.28 points respectively.

All the sectors closed red at the end of the day except Banking and Development Bank which reported a gain of 4.53, and 6.11 points respectively. However, Hotels followed by Non-Life Insurance and Manu & Pro. were the top losers which lost by 15.81, 6.61 and 5.12 points respectively. Microfinance and Life Insurance reported a loss of 2.39 and 3.83 points respectively.

SINDU, BHBL and NHPC underperformed the most as compared to its sector performance while MPFL, NICL and KNBL outperformed its respective sectors. SINDU, BHBL, and LBL are the most volatile stock traded throughout the day. JSLBB, NIBSF1 and SLBBL are trading closer to 52 weeks low while NICA, PRVU and NIBPO are trading near to 52 weeks high.

UPCL hit negative circuit losing by 9.85% at the end of the trading day.

MAJOR MARKET NEWS

- NEPSE lists 6.667% bonus shares of Samata Microfinance for trading.
- CCBL is conducting its AGM on 12th Baisakh, 2076. The main agenda of the AGM is to issue 4.50% cash dividend and 2% bonus shares.
- The book closure for the AGM of SHIVM is set to be on 26th Chaitra, 2075. The main agenda of the AGM is to issue 15.78% cash dividend.
- About 78.64% of the IPO issue of Union Hydropower Company Limited is subscribed.
- BHBL is conducting its AGM on 30th Chaitra, 2075. The main agenda of the AGM is to issue 6% cash dividend.
- About 47% of the IPO issue of Himalaya Urja Bikas Company Limited is subscribed on its first day of issue.



Major Events (Today)

- Union Hydropower Company Limited is issuing 3,534,340 units IPO shares to general public.
- Himalaya Urja Bikas Company Limited is issuing 1,485,000 units IPO shares to general public.
- Sanima Bank Limited calls to place the bids for 2,718,835 units of promoter shares.
- Right Share Issue open for 100% and 65% of MERO and NICL respectively.

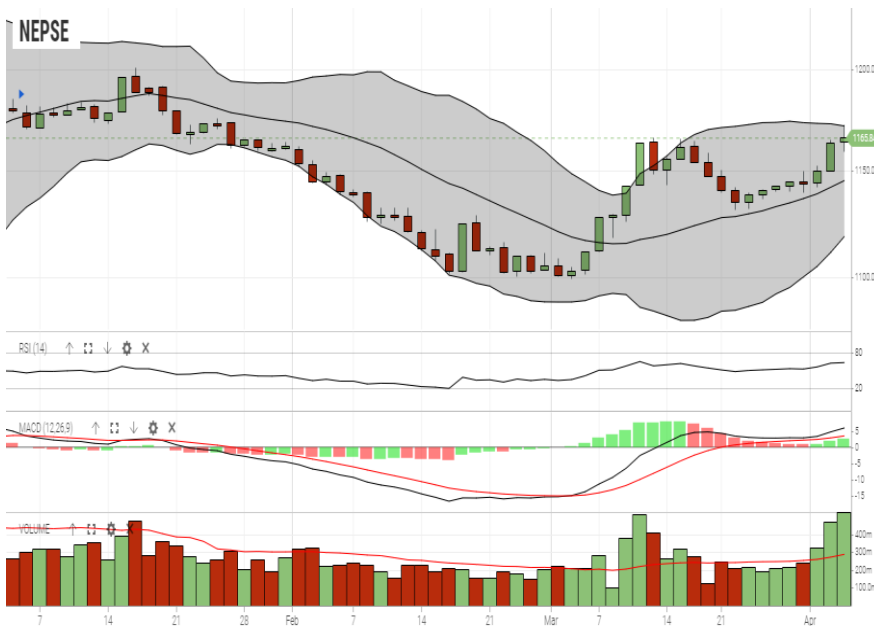
GLOBAL INDICES		
SENSEX	38,877.12	-179.53
NIFTY	11,643.95	-69.25
S&P 500	2,867.24	+0.05
DJIA	26,179.13	-79.29
NIKKEI 225	21,713.21	+207.90

	Scrip Name	Ticker	LTP
UNDER PRICED	Agriculture Development Bank Ltd.	ADBL	305.00
	Nepal Bank Ltd.	NBL	298.00
	Bank of Kathmandu Ltd.	BOKL	250.00
	Mega Bank Nepal Ltd.	MEGA	165.00
	Prabhu Bank Limited	PRVU	245.00
FAIRLY PRICED	Century Commercial Bank Ltd.	CCBL	168.00
	Global IME Bank Limited	GBIME	267.00
	Citizen Bank International Limited	CZBIL	218.00
	Civil Bank Limited	CBL	161.00
	Kumari Bank Limited	KBL	243.00
OVER PRICED	Everest Bank Limited	EBL	592.00
	Standard Chartered Bank Limited	SCB	579.00
	NIC Asia Bank Limited	NICA	436.00
	Nepal SBI Bank Limited	SBI	398.00
	Himalayan Bank Limited	HBL	472.00

Notes: # Above pricing is performed by averaging the prices derived as per P/E, P/B and 180 days closing averages. Based on Published Q2 75/76 data.

Harmonic Mean of industries is carried for Pricings.

NEPSE TECHNICAL OUTLOOKS



Indicators used: Bollinger Bands, MACD, RSI, Moving Average (20 days) Volume

Date / Time	20.12.2075
Close	1,165.84
Open	1,163.71
High	1,172.40
Low	1,158.72
Turnover	545,818,619
Bollinger Bands Top Bollinger Bands (20,2,ma,y)	1,171.77
Bollinger Bands Median Bollinger Bands (20,2,ma,y)	1,145.37
Bollinger Bands Bottom Bollinger Bands (20,2,ma,y)	1,118.97
RSI (14)	64
MA (20, Volume, ma, 0)	288m
MACD (12,26,9)	6
Signal macd (12,26,9)	3
macd (12,26,9)_hist	2



Disclaimers: This MARKET SUMM is prepared to timely update the market participants about the Nepalese stock market before the Market opens for the day. The information and data herein should not be construed as an investment advice or recommendation. Should the investors choose to act based on this report, it shall be entirely at their own risk and KCL Astute shall not be liable, for any loss or damages incurred thereby. Unless otherwise specifically stated, the above data concerns the previous trading day.

KCL Astute Capital Limited

Address: Sundar Bhawan, Hattisar, Kathmandu

Contact No. 977-1-4429149 | 4429150, Email: info@kclastute.com