



### NEPSE Index - Sunday



### MARKET SUMMARY

NEPSE	1,259.64	-0.33%
Total Turnover (Rs.)	474,151,729	-19.72%
Share Volume	1,467,464	-28.79%
Total Transactions	7,765	-8.14%
Total Market Cap. (Rs. Mill)	1,569,058	-0.33%
Floated Market Cap (Rs.Mill)	560,280.75	-0.29%

MARKET CAP TO GDP RATIO **52.17%** ▼

### WEIGHTAGE ON MARKET CAP

Commercial Banks	53.13%
Development Bank	5.16%
Finance	2.92%
Microfinance	6.47%
Life Insurance	7.26%
Non-life Insurance	5.62%
Hydropower	5.78%
Hotel	1.74%
Manufacturing And Processing	4.11%
Trading	0.09%
Others	7.73%
NTC	6.64%

Top Gainers	SLBBL, SPARS, SMFBS
Top Losers	HPPL, ILBS, SLBSL
Top Stocks by Shares Traded	NBL, NCCBPO, ADBL
Top Stocks by Transactions	ILBS, NBL, ALBSL
Top Stocks by Turnover	NBL, ADBL, GBLBS
Top Brokers by Transactions	17, 49, 34

### NEPSE STATISTICS

Average Return	16.63%
Standard Deviation	16.98%
Skewness	0.46
Kurtosis	3.50

Notes: NEPSE Index from 2069.04.01 – 2076.04.19. Avg. annual trade day's 229. Lognormal return is used. Skewness shows market is asymmetrically skewed to right, indicating average return of 16.63% more affected by outliers. Further excess kurtosis shows fat tail and more peaked distribution than normal.

### TRADED SCRIPTS STATS

Category	Up	No Change	Down	No Trade
TOTAL	44	26	99	
CB	4	4	16	3
DEV.	3	6	7	17
NON...	3	3	7	2
LIFE...	2		5	
MICRO.	10	1	18	13
HYDRO.	3	6	14	4
FIN.	6	2	8	12

■ Up ■ No Change ■ Down ■ No Trade

### MAJOR MARKET NEWS

- NEPSE reported a fall of 4.20 points on Sunday, closing at 1259.64.
- Sensitive, Float and Sensitive Float Index fell by 0.75, 0.27 and 0.18 points respectively.
- SLBBL, SPARS, SMFBS, SMB and NAGRO hit positive circuit, price rising by 10%, 10%, 9.99%, 9.94% and 9.89% respectively.
- SEBON has instructed the listed companies of NEPSE to submit annual report complying the standardized format inclusive of corporate governance inside the firm.
- The 5,475,000 units of IPO shares of Sanjen Jalvidhyut and 10,263,150 units of IPO shares of Rasuwagadhi Hydropower is to be listed on NEPSE today.
- ICFC (164) Q4 75/76 y-o-y Net profit rose by 41.33% to Rs.13.89 crores; EPS Rs.15.76 BVPS Rs.135.84
- KBL (215) Q4 75/76 y-o-y Net profit rose by 28.04% to Rs.1.33 arba; EPS Rs.15.36 BVPS Rs.137.
- SWBBL (944) Q4 75/76 y-o-y Net profit rose by 23.17% to Rs.42.25 crores; EPS Rs.67.19 BVPS Rs.278.89
- SBL (323) Q4 75/76 y-o-y Net profit rose by 21.26% to Rs.2.31 arba; EPS Rs.25.98 BVPS Rs.169.77
- AMFI (529) Q4 75/76 y-o-y Net profit rose by 491.83% to Rs.1.19 crores; EPS Rs.19.83 BVPS Rs.114.50
- NHPC (64) Q4 75/76 y-o-y Net profit rose by 524.40% to Rs.91.66 lacs; EPS Rs.3.22 BVPS Rs.70.76

### Major Events (Today)

- NFO Alert:** NMB 50 worth Rs.1.20 billion (120 million units at Rs.10 each). *Issue date extended.*
- NFO Alert:** NIC ASIA Balance Fund worth Rs.1.25 billion (125 million units at Rs.10 each). *Extended*
- IPO Alert:** 7,672,210 units IPO Issue of Himlal Dolakha Hydropower Company Ltd.
- Debenture Alert:** 10.25% NIC ASIA Debenture 2083/84
- Debenture Alert:** 10.25% Machhapuchchhre Debenture 2085
- Debenture Alert:** 10% Himalayan Bank Ltd.

### New Fund Offerings (Upcoming)

	Schemes	Units	@ Rs.	Open
1	Siddhartha Investment Growth Scheme-2 Debenture 2083	140 mil.	10	23/4/76

Fundamental Watch: Quarter 4 2075/76 Unaudited Reports



# MARKET SUMM...

20<sup>th</sup> Asadh, 2076 Monday

## INDICES % CHANGE

0.01% 0.16%



### Volatile Stock

ILBS	(507)	12.22%
MLBBL	(518)	10.76%
SPARS	(726)	10.00%

### Stock Movement

NAGRO	(867)	Highest till now
SMFBS	(793)	Highest till now
KPCL	(89)	Lowest till now

### Highest Volume – Day 1 (Week 4)

NBL	(335)	154,007 units
NCCBPO	(126)	100,000 units
ADBL	(437)	68,518 units

### Sectorial Outlooks

<b>Bullish</b>	<b>Bearish</b>
Life Insurance	Microfinance
Non-Life Insurance	Finance

### Stock Pick...

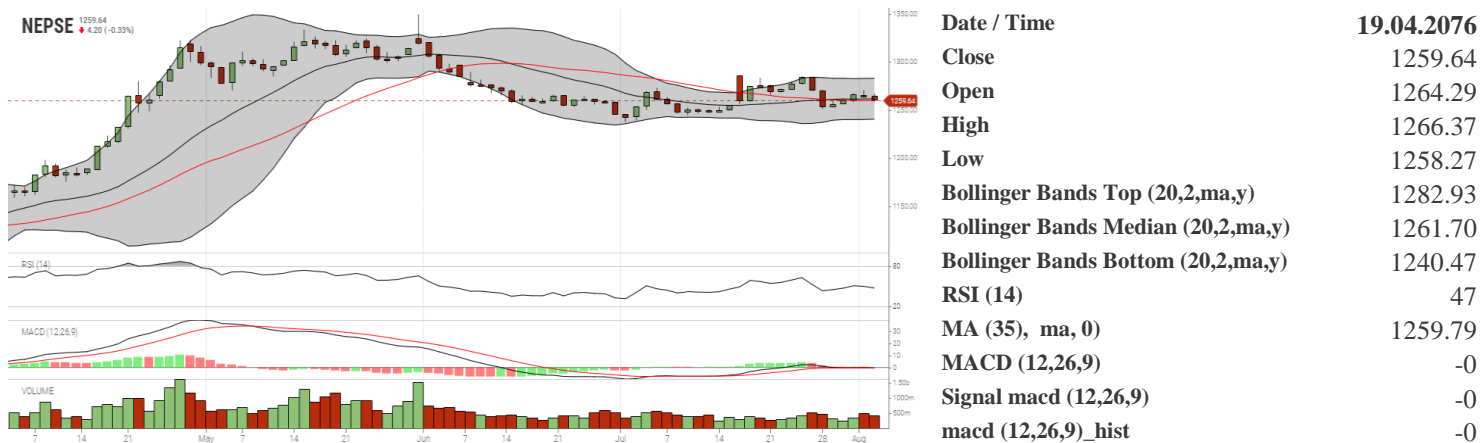
<b>Up Pick</b>	<b>Down Pick</b>
PICL	FMDBL
GLICL	NCCB

### Financial Metrics

S.N.	Ticker	LTP	EPS	BVPS	P/E	P/B	ROE	NPL	CAR	Remarks
1	SBL	323	26.59	169.77	12.15	1.90	16.04%	0.75%	12.56%	-
2	CORBL	121	24.99	99.25	4.84	1.22	31.65%	29.66%	126.12%	-
3	SMFDB	590	28.43	150.07	20.75	3.93	20.71%	2.26%	18.51%	-
4	NBL	335	27.15	300.05	12.34	1.12	9.97%	2.58%	17.41%	-
5	SMATA	1283	42.32	238.87	30.32	5.37	25.21%	0.98%	10.17%	-

Note: If asterisk sign (\*) financial metrics denotes Quarter 3 75/76 data, otherwise financial metrics are of Quarter 4 75/76 data.

### NEPSE TECHNICAL OUTLOOKS



Indicators used: Bollinger Bands, MACD, RSI, Moving Average (35 days) Volume

<b>Global Indices</b>	<b>SENSEX</b> 36,532.85 (-1.58%)	<b>NIFTY</b> 10,817.45 (-1.64%)	<b>S&amp;P 500</b> 2,932.05 (-0.73%)	<b>DJIA</b> 26,485.01 (-0.37%)	<b>NIKKEI 225</b> 20,598.50 (-2.23%)
-----------------------	-------------------------------------	------------------------------------	---	-----------------------------------	---

Disclaimers: This MARKET SUMM is prepared to timely update the market participants about the Nepalese stock market before the Market opens for the day. The information and data herein should not be construed as an investment advice or recommendation. Should the investors choose to act based on this report, it shall be entirely at their own risk and KCL Astute shall not be liable, for any loss or damages incurred thereby. Unless otherwise specifically stated, the above data concerns the previous trading day.

Today's Outlook

### KCL Astute Capital Limited

Address: Sundar Bhawan, Hattisar, Kathmandu

Contact No. 977-1-4429149 | 4429150,

Email: [info@kclastute.com](mailto:info@kclastute.com)

KCL ASTUTE CAPITAL RESEARCH TEAM