



MARKET OVERVIEW

MARKET SUMMARY		
NEPSE	1,294.39	-0.32%
Total Turnover (Rs.)	587,855,113	-38.13%
Share Volume	1,803,026	-39.24%
Total Transactions	7,898	-21.60%
Total Market Cap. (Rs. Mill)	1,603,867.57	-0.32%
Floated Market Cap (Rs. Mill)	565,205.89	-0.35%

NEPSE closed the week's trade with a bearish candle. Market reported a fall of 4.21 points closing at 1294.39 on Thursday. The highest index reached throughout the day was 1300.43 while the lowest index reached was 1282.95. Turnover, share volume and total transactions all decreased by 38.13%, 39.24% and 21.60% respectively. The trade of 170 scripts resulted in a total turnover of Rs. 58.78 crores. Sensitive, Float and Sensitive Float reported a loss of 1.28, 0.34 and 0.39 points respectively.

MARKET CAP TO GDP RATIO	53.33% ▼
-------------------------	----------

Most of the sectors closed red at the end of the day except Manu & Pro, Non-Life Insurance and Hotels which reported gain of 38.08, 37.55 and 13.63 points respectively. Sectors to lose the most at the end of the trading day were Life Insurance followed by Development Bank and Microfinance which reported loss of 18.68, 10.32 and 6.9 points respectively.

WEIGHTAGE ON MARKET CAP	
Commercial Banks	53.33%
Development Bank	4.96%
Finance	2.96%
Microfinance	6.10%
Life Insurance	8.20%
Non-life Insurance	6.31%
Hydropower	5.61%
Hotel	1.61%
Manufacturing And Processing	3.31%
Trading	0.10%
Others	7.52%
NTC	6.54%

SADBL, UMHL and NHPC underperformed the most as compared to its sector performance while BHBL, UPCL and PRVUPO outperformed its respective sectors. UPCL, AHPC and SHIVM are the most volatile stock that traded throughout the day. CHL, CEFL and KMFL are trading closer to 52 weeks low while NIBPO, OHL, and HBL are trading near to 52 weeks high.

Top Gainers	HDL, SHIVM, UPCL
Top Losers	UMHL, NEF, EDBL
Top Stocks by Shares Traded	NBL, CBL, SHIVM
Top Stocks by Transactions	SHIVM, UPPER, NLIC
Top Stocks by Turnover	NBL, NLIC, SHIVM
Top Brokers by Turnover	42, 49, 58

HDL was the top gainer that gained by 5.27% at the end of the trading day. Whereas, UMHL was the top loser that lost by 5.04%.

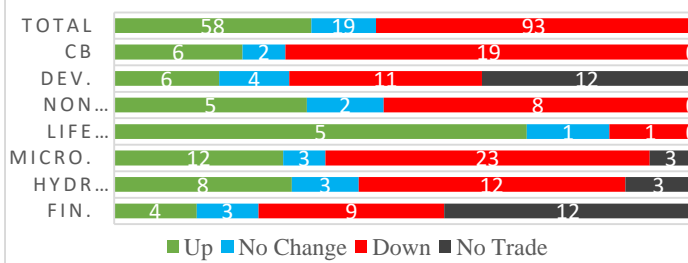
MAJOR MARKET NEWS

NEPSE STATISTICS	
Average Return	17.74%
Standard Deviation	17.21%
Standard Error	1.14%
Skewness	0.45
Kurtosis	3.39

Notes: NEPSE Index from 2069.04.01 – 2076.01.19. Avg. annual trade day's 229. Lognormal return is used. Skewness shows market is asymmetrically skewed to right, indicating average return of 17.74% more affected by outliers. Further excess kurtosis shows fat tail and more peaked distribution than normal.

- ☑ Shares of Panchthar Power Company Limited has been listed in NEPSE for trading.
- ☑ KBL has published its financial report for 3rd Quarter 75/76. The net profit of the company has increased by 36.26% on a y-o-y basis. EPS and BVPS stands at Rs. 18.67 and Rs. 147.63 respectively.
- ☑ IPO of Union Hydropower Company Limited is allotted on Thursday.
- ☑ EDBL has published its financial report for 3rd Quarter 75/76. The net profit of the company has increased by 2.97% on a y-o-y basis. EPS and BVPS stands at Rs. 22.03 and Rs. 133.69 respectively.
- ☑ IPO of Sanjen Jalbidhyut Company Limited and Rasuwagadhi Hydropower Company Limited is allotted.

TRADED SCRIPTS STATS





SLBSL has published its financial report for 3rd Quarter 75/76. The net profit of the company has increased by 30.62% on a y-o-y basis. EPS and BVPS stands at Rs. 23.94 and Rs. 148.96 respectively.

Major Events (Today)

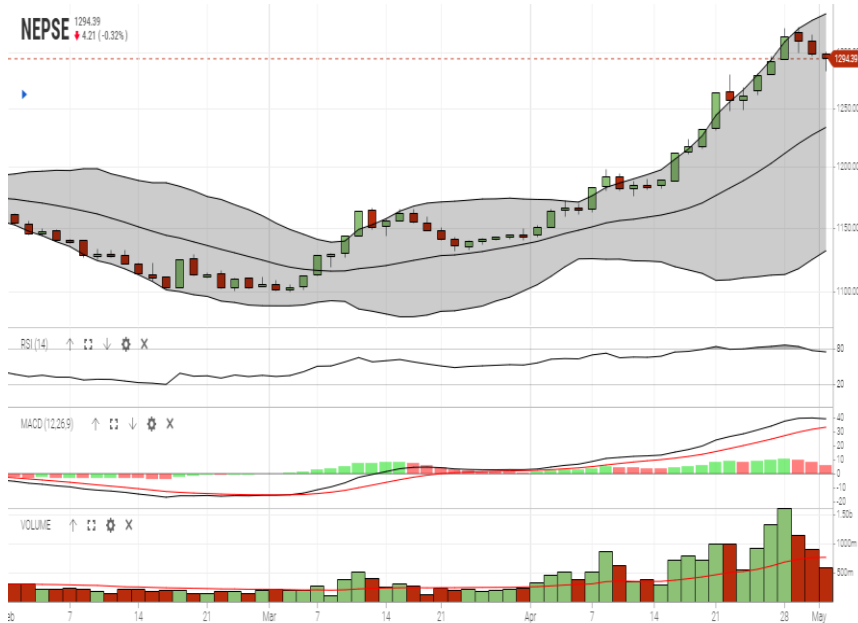
- Issue open for 60% and 50% right shares of ALICL, and GLICL.
- MLBBL is selling its unsold 21,642.69 units of unsold right shares via auction. The bids for the auction will be accepted will 27th Baisakh, 2076.

GLOBAL INDICES		
SENSEX	39,981.43	-50.12
NIFTY	11,724.75	-23.40
S&P 500	2,923.73	-22.10
DJIA	26,430.14	-162.77
NIKKEI 225	22,258.73	-48.85

	Scrip Name	Ticker	LTP
UNDER PRICED	Nepal Bank Ltd.	NBL	314.00
	Kumari Bank Ltd.	KBL	224.00
	Civil Bank Ltd.	CBL	156.00
	Agriculture Development Bank Ltd.	ADBL	385.00
	Nepal Credit and Commerce Ltd.	NCCB	236.00
FAIRLY PRICED	Century Commercial Bank Ltd	CCBL	173.00
	Bank of Kathmandu Ltd.	BOKL	282.00
	Citizen Bank International Ltd.	CZBIL	225.00
	Mega Bank Nepal Ltd.	MEGA	184.00
	Janata Bank Nepal Ltd.	JBNL	202.00
OVER PRICED	Standard Chartered Bank Limited	SCB	690.00
	Himalayan Bank Limited	HBL	595.00
	Nepal SBI Bank Limited	SBI	485.00
	Everest Bank Limited	EBL	656.00
	NIC Asia Bank Limited	NICA	491.00

Notes: # Above pricing is performed by averaging the prices derived as per P/E, P/B and 180 days closing averages. Based on Published Q2 75/76 data.
Harmonic Mean of industries is carried for Pricings.

NEPSE TECHNICAL OUTLOOKS



Date / Time	19.01.2076
Close	1,294.39
Open	1,298.80
High	1,300.43
Low	1,282.95
Turnover	587,855,113
Bollinger Bands Top Bollinger Bands (20,2,ma,y)	1,335.87
Bollinger Bands Median Bollinger Bands (20,2,ma,y)	1,233.80
Bollinger Bands Bottom Bollinger Bands (20,2,ma,y)	1,131.72
RSI (14)	75
MA (20, Volume, ma, 0)	766m
MACD (12,26,9)	39
Signal macd (12,26,9)	33
macd (12,26,9)_hist	6

Indicators used: Bollinger Bands, MACD, RSI, Moving Average (20 days) Volume



Disclaimers: This MARKET SUMM is prepared to timely update the market participants about the Nepalese stock market before the Market opens for the day. The information and data herein should not be construed as an investment advice or recommendation. Should the investors choose to act based on this report, it shall be entirely at their own risk and KCL Astute shall not be liable, for any loss or damages incurred thereby. Unless otherwise specifically stated, the above data concerns the previous trading day.

KCL Astute Capital Limited

Address: Sundar Bhawan, Hattisar, Kathmandu
Contact No. 977-1-4429149 | 4429150, Email: info@kclastute.com