



MARKET SUMMARY		
NEPSE	1,277.68	-1.29%
Total Turnover (Rs.)	650,378,454	+10.64%
Share Volume	2,312,530	+28.26%
Total Transactions	8,313	+5.25%
Total Market Cap. (Rs. Mill)	1,583,157.29	-1.29%
Floated Market Cap (Rs. Mill)	556,657.62	-1.51%

MARKET CAP TO GDP RATIO **52.64%** ▼

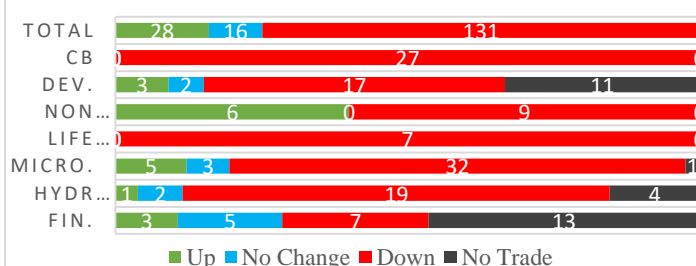
WEIGHTAGE ON MARKET CAP	
Commercial Banks	53.20%
Development Bank	4.96%
Finance	2.97%
Microfinance	6.07%
Life Insurance	8.14%
Non-life Insurance	6.35%
Hydropower	5.58%
Hotel	1.61%
Manufacturing And Processing	3.38%
Trading	0.10%
Others	7.64%
NTC	6.67%

Top Gainers	MPFL, UFL, SHIVM
Top Losers	CHCL, NIBSF1, AHPC
Top Stocks by Shares Traded	NBL, PRVU, SHIVM
Top Stocks by Transactions	SHIVM, PRVU, UPPER
Top Stocks by Turnover	NBL, PRVU, SHIVM
Top Brokers by Turnover	42, 34, 25

NEPSE STATISTICS	
Average Return	17.53%
Standard Deviation	17.22%
Standard Error	1.14%
Skewness	0.45
Kurtosis	3.38

Notes: NEPSE Index from 2069.04.01 – 2076.01.22. Avg. annual trade day's 229. Lognormal return is used. Skewness shows market is asymmetrically skewed to right, indicating average return of 17.53% more affected by outliers. Further excess kurtosis shows fat tail and more peaked distribution than normal.

TRADED SCRIPTS STATS



MARKET OVERVIEW

NEPSE opened the week's trade with a bearish candle. Market reported a fall of 16.71 points closing at 1277.68 on Sunday. The highest index reached throughout the day was 1294.53 while the lowest index reached was 1276.73. Turnover, share volume and total transactions all increased by 10.64%, 28.26% and 5.25% respectively. The trade of 175 scripts resulted in a total turnover of Rs. 65.03 crores. Sensitive, Float and Sensitive Float reported a loss of 3.86, 1.44 and 1.37 points respectively.

Most of the sectors closed red at the end of the day except Manu & Pro, and Others which reported gain of 20.8 and 1.12 points respectively. Sectors to lose the most at the end of the trading day were Life Insurance followed by Hydropower and Microfinance which reported loss of 127.02, 53.88 and 25.87 points respectively. Banking and Non-Life Insurance lost by 16.02 and 24.73 points respectively.

SIFC, CHCL and UPCL underperformed the most as compared to its sector performance while NHPC, NLBBL, and SHIVM outperformed its respective sectors. SHIVM, NLG, and SHPC are the most volatile stock that traded throughout the day. JSLBB, DHPL and KMFL are trading closer to 52 weeks low while CMF1, HBL, and MNBBL are trading near to 52 weeks high.

MPFL hit positive circuit by gaining 10% at the end of the trading day. Whereas, CHCL was the top loser that lost by 7.63%.

MAJOR MARKET NEWS

- Bonus Shares of HBL, STC, MIDBL and SH has been listed in NEPSE for trading.
- IPO of Gurans Laghubitta Bitiya Sanstha Limited has been oversubscribed by almost 23 times.
- IPO shares of Sparsha Laghubitta Bittiya Sanstha Ltd. is listed on NEPSE for trading.
- NLG has called its shareholders to attend SGM on 14th Jestha, 2076. The main agenda of the SGM is to issue 60% right shares to its shareholders.
- The opening range for the first transaction of Panchthar Power Company is set at Rs. 86.62 to 259.86.
- LICN has published its financial report for 3rd Quarter 75/76. The net profit of the company has increased by 7.38% on a y-o-y basis. EPS and BVPS stands at Rs. 9.56 and Rs. 147 respectively.



PRVU has published its financial report for 3rd Quarter 75/76. The net profit of the company has increased by 58.36% on a y-o-y basis. EPS and BVPS stands at Rs. 23.34 and Rs. 170.15 respectively.

Major Events (Today)

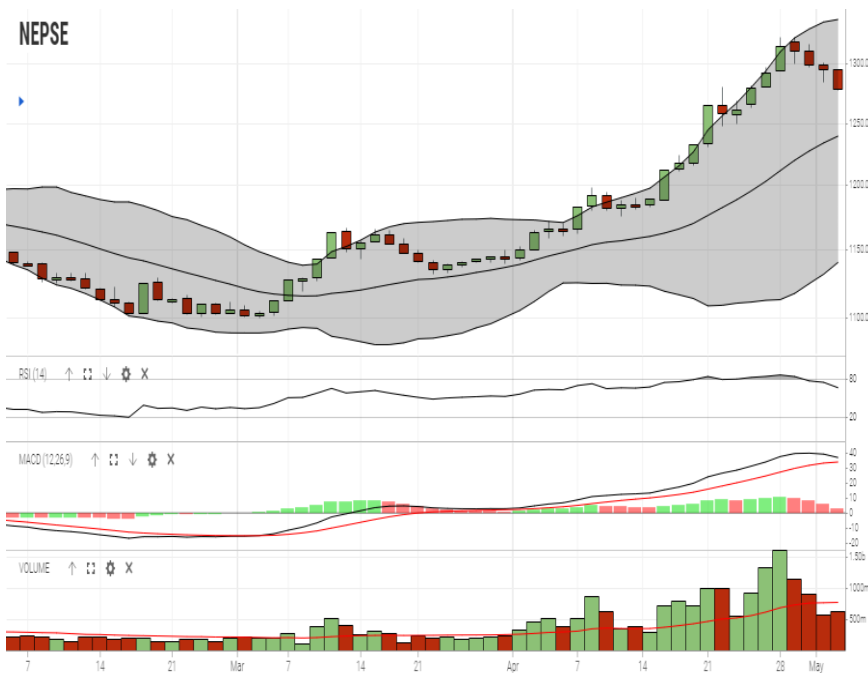
- Issue open for 60% and 50% right shares of ALICL, and GLICL.
- MLBBL is selling its unsold 21,642.69 units of unsold right shares via auction. The bids for the auction will be accepted will 27th Baisakh, 2076.

GLOBAL INDICES		
SENSEX	38,963.26	-18.17
NIFTY	11,712.25	-12.50
S&P 500	2,945.64	+28.12
DJIA	26,504.95	+197.16
NIKKEI 225	22,258.73	-48.85

	Scrip Name	Ticker	LTP
UNDER PRICED	Nepal Bank Ltd.	NBL	310.00
	Kumari Bank Ltd.	KBL	221.00
	Civil Bank Ltd.	CBL	152.00
	Agriculture Development Bank Ltd.	ADBL	379.00
	Nepal Credit and Commerce Ltd.	NCCB	232.00
FAIRLY PRICED	Century Commercial Bank Ltd	CCBL	170.00
	Bank of Kathmandu Ltd.	BOKL	275.00
	Citizen Bank International Ltd.	CZBIL	221.00
	Mega Bank Nepal Ltd.	MEGA	182.00
	Janata Bank Nepal Ltd.	JBNL	199.00
OVER PRICED	Standard Chartered Bank Limited	SCB	686.00
	Himalayan Bank Limited	HBL	588.00
	Nepal SBI Bank Limited	SBI	484.00
	Everest Bank Limited	EBL	647.00
	NIC Asia Bank Limited	NICA	483.00

Notes: # Above pricing is performed by averaging the prices derived as per P/E, P/B and 180 days closing averages. Based on Published Q2 75/76 data.
Harmonic Mean of industries is carried for Pricings.

NEPSE TECHNICAL OUTLOOKS



Date / Time	22.01.2076
Close	1,277.68
Open	1,294.53
High	1,294.53
Low	1,276.73
Turnover	650,378,454
Bollinger Bands Top Bollinger Bands (20,2,ma,y)	1,338.16
Bollinger Bands Median Bollinger Bands (20,2,ma,y)	1,239.39
Bollinger Bands Bottom Bollinger Bands (20,2,ma,y)	1,140.61
RSI (14)	67
MA (20, Volume, ma, 0)	770m
MACD (12,26,9)	37
Signal macd (12,26,9)	34
macd (12,26,9)_hist	3

Indicators used: Bollinger Bands, MACD, RSI, Moving Average (20 days) Volume



Disclaimers: This MARKET SUMM is prepared to timely update the market participants about the Nepalese stock market before the Market opens for the day. The information and data herein should not be construed as an investment advice or recommendation. Should the investors choose to act based on this report, it shall be entirely at their own risk and KCL Astute shall not be liable, for any loss or damages incurred thereby. Unless otherwise specifically stated, the above data concerns the previous trading day.

KCL Astute Capital Limited

Address: Sundar Bhawan, Hattisar, Kathmandu
Contact No. 977-1-4429149 | 4429150, Email: info@kclastute.com