



MARKET SUMMARY		
NEPSE	1,182.36	+1.47%
Total Turnover (Rs.)	543,955,642	+28.45%
Share Volume	1,887,373	+6.65%
Total Transactions	7,532	+9.62%
Total Market Cap. (Rs. Mill)	1,445,062.37	+1.47%
Floated Market Cap (Rs. Mill)	510,241.07	+1.79%

MARKET CAP TO GDP RATIO	48.05%	▲
-------------------------	--------	---

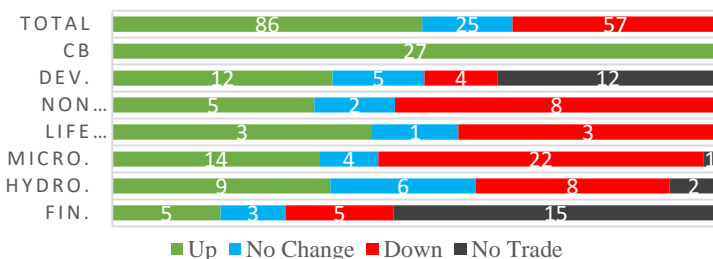
WEIGHTAGE ON MARKET CAP	
Commercial Banks	52.92%
Development Bank	5.09%
Finance	3.26%
Microfinance	5.90%
Life Insurance	7.70%
Non-life Insurance	6.28%
Hydropower	5.63%
Hotel	1.58%
Manufacturing And Processing	3.45%
Trading	0.11%
Others	8.08%
NTC	7.04%

Top Gainers	NICA, KMFL, KBL
Top Losers	UPCL, SINDU, SLBSL
Top Stocks by Shares Traded	NICA, SHPC, NCCB
Top Stocks by Transactions	NICA, UPPER, UPCL
Top Stocks by Turnover	NICA, NMB, SHPC
Top Brokers by Turnover	49, 44, 58

NEPSE STATISTICS	
Average Return	16.59%
Standard Deviation	17.22%
Standard Error	1.14%
Skewness	0.45
Kurtosis	3.43

Notes: NEPSE Index from 2069.04.01 – 2075.12.24. Avg. annual trade day's 229. Lognormal return is used. Skewness shows market is asymmetrically skewed to right, indicating average return of 16.59% more affected by outliers. Further excess kurtosis shows fat tail and more peaked distribution than normal.

## TRADED SCRIPTS STATS



## MARKET OVERVIEW

NEPSE opened the week's trade with a green candle. It reported a gain of 17.16 points closing at 1182.36 at the end of trading day. The highest index reached throughout the day was 1182.36 while the lowest index reached was 1161.60. Turnover, share volume, and total transactions all reported gain by 28.45%, 6.65% and 9.62% respectively. The trade of 168 scripts resulted in a total turnover of Rs.54.396 crores. Sensitive, Float and Sensitive Float also reported a gain of 4.41, 1.52 and 1.61 points respectively.

Non-Life Insurance followed by Manu & Pro. and Others were the top losers which lost by 19.21, 5.82, and 2.75 points respectively. However, Banking followed by Development Banks and Hotels were the gainers which reported a gain of 28.19, 14.99 and 13 points respectively. Finance and Life Insurance also reported a gain of 1.78, 0.12 points respectively at the end of trading day.

UPCL, SINDU, and CHLBS underperformed the most as compared to its sector performance while BHBL, KMFL and KNBL outperformed its respective sectors. SLBSL, BHBL, and SINDU are the most volatile stock traded throughout the day. JSLBB, SLBBL, and NNLB are trading closer to 52 weeks low while NICA, PRVU and NIBPO are trading near to 52 weeks high.

UPCL hit negative circuit losing by 9.26% at the end of the trading day.

## MAJOR MARKET NEWS

- NRB is auctioning T-Bill worth Rs. 8.89 arba with different maturity periods of 91 days, 182 days and 364 days today.
- Last day to apply for right shares of Nepal Insurance Company Limited.
- Nabil Balance Fund II will be floating its public issue of 12 crore units mutual funds scheme worth Rs. 1.2 arba from 5<sup>th</sup> Baisakh, 2076.
- The issue of 60% right shares of ALICL is set to be opened from today.
- 84.36% of the IPO issue of Union Hydropower Company Limited is subscribed till Sunday.
- IPO issue of Himalaya Urja Bikas Company Limited is oversubscribed by 2.75 times on its third day of issue.



### Major Events (Today)

- Union Hydropower Company Limited is issuing 3,534,340 units IPO shares to general public.
- Himalaya Urja Bikas Company Limited is issuing 1,485,000 units IPO shares to general public.
- Sanima Bank Limited calls to place the bids for 2,718,835 units of promoter shares.
- Today is the Book Closure date for the AGM of SHIVM. The special agenda of the AGM is to issue 15.78% cash dividend to its shareholders.
- Right Share Issue open for 65% and 60% of NICL and ALICL respectively.

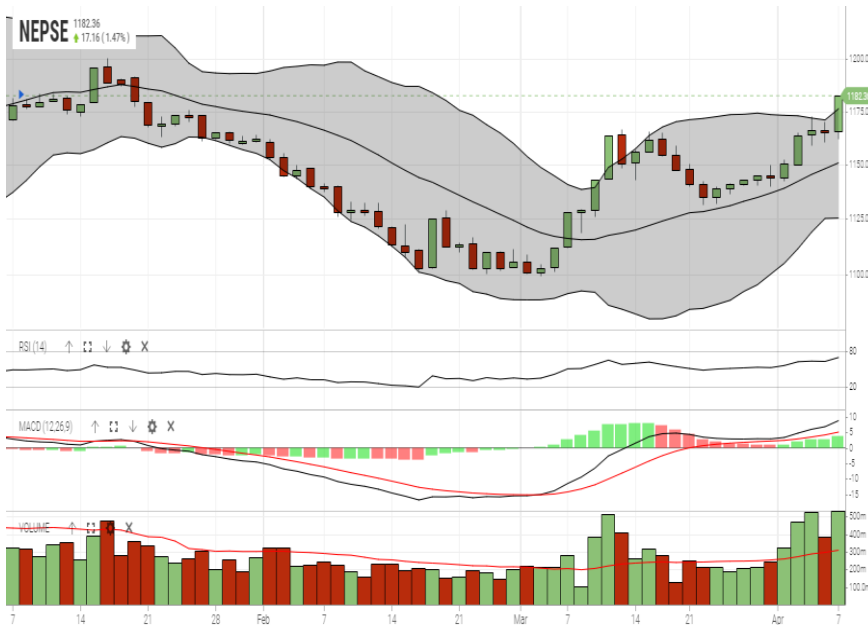
GLOBAL INDICES		
SENSEX	38,862.23	+177.51
NIFTY	11,665.95	+67.95
S&P 500	2,892.74	+13.35
DJIA	26,424.99	+40.36
NIKKEI 225	21,807.50	+82.55

	Script Name	Ticker	LTP
UNDER PRICED	Agriculture Development Bank Ltd.	ADBL	309.00
	Nepal Bank Ltd.	NBL	301.00
	Mega Bank Nepal Ltd.	MEGA	168.00
	Bank of Kathmandu Ltd.	BOKL	261.00
	Prabhu Bank Limited	PRVU	251.00
FAIRLY PRICED	Century Commercial Bank Ltd.	CCBL	172.00
	Citizen Bank International Limited	CZBIL	220.00
	Global IME Bank Limited	GBIME	278.00
	Civil Bank Limited	CBL	164.00
	Kumari Bank Limited	KBL	253.00
OVER PRICED	Everest Bank Limited	EBL	614.00
	Standard Chartered Bank Limited	SCB	585.00
	NIC Asia Bank Limited	NICA	468.00
	Nepal SBI Bank Limited	SBI	417.00
	Himalayan Bank Limited	HBL	483.00

**Notes:** # Above pricing is performed by averaging the prices derived as per P/E, P/B and 180 days closing averages. Based on Published Q2 75/76 data.

# Harmonic Mean of industries is carried for Pricings.

### NEPSE TECHNICAL OUTLOOKS



Indicators used: Bollinger Bands, MACD, RSI, Moving Average (20 days) Volume

Date / Time	24.12.2075
Close	1,182.36
Open	1,164.94
High	1,182.36
Low	1,161.60
Turnover	543,955,642
Bollinger Bands Top Bollinger Bands (20,2,ma,y)	1,176.16
Bollinger Bands Median Bollinger Bands (20,2,ma,y)	1,150.77
Bollinger Bands Bottom Bollinger Bands (20,2,ma,y)	1,125.39
RSI (14)	70
MA (20, Volume, ma, 0)	308m
MACD (12,26,9)	9
Signal macd (12,26,9)	5
macd (12,26,9)_hist	4



*Disclaimers: This MARKET SUMM is prepared to timely update the market participants about the Nepalese stock market before the Market opens for the day. The information and data herein should not be construed as an investment advice or recommendation. Should the investors choose to act based on this report, it shall be entirely at their own risk and KCL Astute shall not be liable, for any loss or damages incurred thereby. Unless otherwise specifically stated, the above data concerns the previous trading day.*

### KCL Astute Capital Limited

Address: Sundar Bhawan, Hattisar, Kathmandu

Contact No. 977-1-4429149 | 4429150, Email: [info@kclastute.com](mailto:info@kclastute.com)