



MARKET SUMMARY		
NEPSE	1,165.20	-0.05%
Total Turnover (Rs.)	423,492,663	-22.41%
Share Volume	1,769,700	-12.78%
Total Transactions	6,871	-4.60%
Total Market Cap. (Rs. Mill)	1,424,089.62	-0.05%
Floated Market Cap (Rs. Mill)	501,289.29	-0.05%

MARKET CAP TO GDP RATIO	47.35% ▼
-------------------------	----------

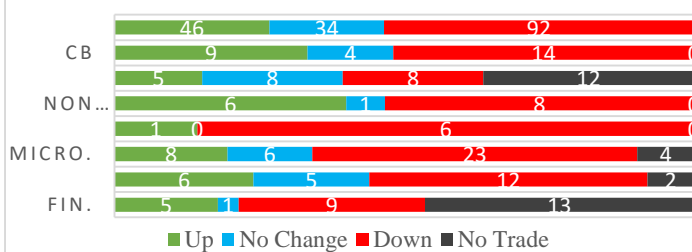
WEIGHTAGE ON MARKET CAP	
Commercial Banks	52.24%
Development Bank	5.11%
Finance	3.30%
Microfinance	5.99%
Life Insurance	7.82%
Non-life Insurance	6.39%
Hydropower	5.74%
Hotel	1.59%
Manufacturing And Processing	3.51%
Trading	0.11%
Others	8.20%
NTC	7.14%

Top Gainers	SINDU, BHBL, SLBS
Top Losers	UPCL, RBCLPO, KMCDB
Top Stocks by Shares Traded	CBL, NCCB, NICA
Top Stocks by Transactions	UPPER, NICA, SHIVM
Top Stocks by Turnover	NICA, NCCB, CBL
Top Brokers by Turnover	58, 49, 38

NEPSE STATISTICS	
Average Return	16.39%
Standard Deviation	17.22%
Standard Error	1.14%
Skewness	0.45
Kurtosis	3.44

Notes: NEPSE Index from 2069.04.01 – 2075.12.21. Avg. annual trade day's 229. Lognormal return is used. Skewness shows market is asymmetrically skewed to right, indicating average return of 16.39% more affected by outliers. Further excess kurtosis shows fat tail and more peaked distribution than normal.

### TRADED SCRIPTS STATS



### MARKET OVERVIEW

NEPSE reported a loss of 0.64 points closing at 1165.20 at the end of trading day on Thursday. After experiencing gain for 3 consecutive trading days, NEPSE closed with the bearish candle at the end of the week. The highest index reached throughout the day was 1169.87 while the lowest index reached was 1159.90. Turnover, share volume, and total transactions all reported a fall by 22.41%, 12.78% and 4.60% respectively. The trade of 172 scripts resulted in a total turnover of Rs.42.35 crores. Sensitive, Float and Sensitive Float also reported a loss of 0.15, 0.05 and 0.05 points respectively.

Hotels followed by Life Insurance and Microfinance were the top losers which lost by 23.48, 20.08, 8.77 points respectively. However, Manu & Pro. followed by Non-Life Insurance and Banking were the gainers which reported a marginal gain of 6.05, 1.05 and 0.95 points respectively. Finance also reported a gain of 0.51 points at the end of trading day.

UPCL, RBCLPO and SDESI underperformed the most as compared to its sector performance while BHBL, SLBS and NCDB outperformed its respective sectors. SLBSL, BHBL, and SLBS are the most volatile stock traded throughout the day. SLBBL, DHPL, and JSLBB are trading closer to 52 weeks low while NICA, PRVU and CBLPO are trading near to 52 weeks high.

UPCL hit negative circuit losing by 9.24% at the end of the trading day.

### MAJOR MARKET NEWS

- Kabeli Bikas Bank and Saptakoshi Development Bank are conducting SGM on 27<sup>th</sup> Chaitra, 2075. The main agenda of SGM is to discuss the merger of the two development banks.
- Sabaiko Laghubitta is issuing 5.30 lakhs unit IPO shares to general public. ICRA Rating of ICRANP IPO Grade 4 is assigned to the proposed IPO.
- NRB invites BFIs to bid for 365 days Fixed Deposit from Baisakh 02, 2076 to Baisakh 01, 2077.
- CCBL is conducting its 8<sup>th</sup> AGM on 12<sup>th</sup> Baisakh, 2076. The main agenda of the AGM is to issue 4.5% cash dividend and 2% bonus shares.
- IPO issue of Himalaya Urja Bikas Company Limited is oversubscribed by 1.22 times on its second day of issue.



### Major Events (Today)

- Union Hydropower Company Limited is issuing 3,534,340 units IPO shares to general public.
- Himalaya Urja Bikas Company Limited is issuing 1,485,000 units IPO shares to general public.
- Sanima Bank Limited calls to place the bids for 2,718,835 units of promoter shares.
- Right Share Issue open for 100% and 65% of MERO, and NICL respectively.

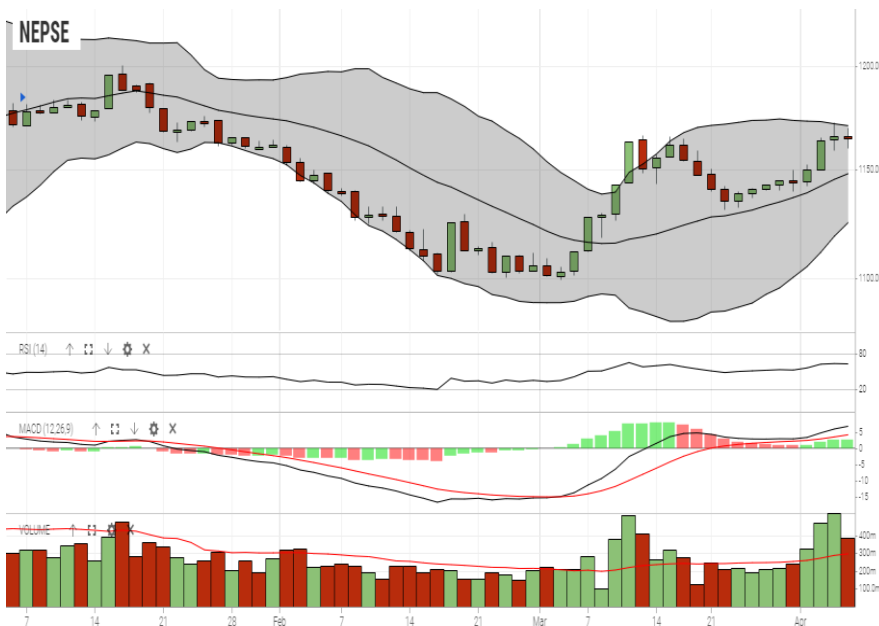
GLOBAL INDICES		
SENSEX	38,684.72	-192.40
NIFTY	11,598.00	-45.95
S&P 500	2,873.40	-0.63
DJIA	26,218.13	+39.00
NIKKEI 225	21,724.95	+11.74

	Scrip Name	Ticker	LTP
UNDER PRICED	Agriculture Development Bank Ltd.	ADBL	304.00
	Nepal Bank Ltd.	NBL	296.00
	Bank of Kathmandu Ltd.	BOKL	249.00
	Mega Bank Nepal Ltd.	MEGA	165.00
	Prabhu Bank Limited	PRVU	244.00
FAIRLY PRICED	Century Commercial Bank Ltd.	CCBL	167.00
	Global IME Bank Limited	GBIME	272.00
	Citizen Bank International Limited	CZBIL	216.00
	Civil Bank Limited	CBL	160.00
	Kumari Bank Limited	KBL	241.00
OVER PRICED	Everest Bank Limited	EBL	596.00
	Standard Chartered Bank Limited	SCB	574.00
	NIC Asia Bank Limited	NICA	440.00
	Nepal SBI Bank Limited	SBI	403.00
	Himalayan Bank Limited	HBL	475.00

**Notes:** # Above pricing is performed by averaging the prices derived as per P/E, P/B and 180 days closing averages. Based on Published Q2 75/76 data.

# Harmonic Mean of industries is carried for Pricings.

### NEPSE TECHNICAL OUTLOOKS



Indicators used: Bollinger Bands, MACD, RSI, Moving Average (20 days) Volume

Date / Time	21.12.2075
Close	1,165.20
Open	1,165.85
High	1,169.47
Low	1,159.90
Turnover	423,492,663
Bollinger Bands Top Bollinger Bands (20,2,ma,y)	1,170.87
Bollinger Bands Median Bollinger Bands (20,2,ma,y)	1,148.04
Bollinger Bands Bottom Bollinger Bands (20,2,ma,y)	1,125.22
RSI (14)	64
MA (20, Volume, ma, 0)	298m
MACD (12,26,9)	7
Signal macd (12,26,9)	4
macd (12,26,9)_hist	3



*Disclaimers: This MARKET SUMM is prepared to timely update the market participants about the Nepalese stock market before the Market opens for the day. The information and data herein should not be construed as an investment advice or recommendation. Should the investors choose to act based on this report, it shall be entirely at their own risk and KCL Astute shall not be liable, for any loss or damages incurred thereby. Unless otherwise specifically stated, the above data concerns the previous trading day.*

### KCL Astute Capital Limited

Address: Sundar Bhawan, Hattisar, Kathmandu

Contact No. 977-1-4429149 | 4429150, Email: [info@kclastute.com](mailto:info@kclastute.com)