



MARKET SUMMARY		
NEPSE	1,111.76	0.83%
Total Turnover (Rs.)	224,666,128	-0.25%
Share Volume	826,013	12.62%
Total Transactions	4,302	-0.58%
Total Market Cap. (Rs. Mill)	1,357,854.18	0.88%
Floated Market Cap (Rs.Mill)	475,413.2	0.95%

MARKET CAP TO GDP RATIO	45.15% ▲
-------------------------	----------

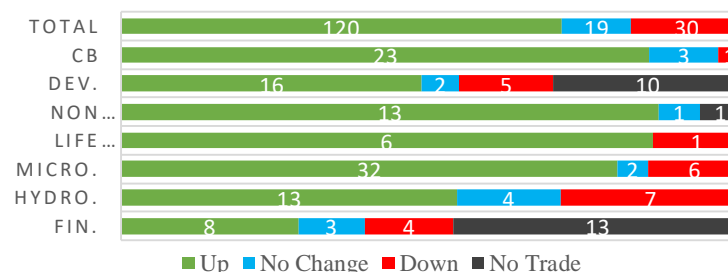
WEIGHTAGE ON MARKET CAP	
Commercial Banks	51.26%
Development Bank	5.25%
Finance	3.43%
Microfinance	6.41%
Life Insurance	8.18%
Non-life Insurance	6.76%
Hydropower	5.72%
Hotel	1.67%
Manufacturing And Processing	2.64%
Trading	0.10%
Others	8.57%
NTC	7.51%

Top Gainers	HATH, KADBL, RRHP
Top Losers	GHL, GRDBL, NIBLPF
Top Stocks by Shares Traded	NCCB, JBNLPO, NBL
Top Stocks by Transactions	UPPER, CHLBS, NLIC
Top Stocks by Turnover	NCCB, NBL, NLIC
Top Brokers by Turnover	34, 6, 49

NEPSE STATISTICS	
Average Return	15.90%
Standard Deviation	17.28%
Standard Error	1.14%
Skewness	0.46
Kurtosis	3.42

Notes: NEPSE Index from 2069.04.01 – 2075.11.22. Avg. annual trade day's 229. Lognormal return is used. Skewness shows market is asymmetrically skewed to right, indicating average return of 15.90% more affected by outliers. Further excess kurtosis shows fat tail and more peaked distribution than normal.

TRADED SCRIPTS STATS



MARKET OVERVIEW

NEPSE posted a gain of 9.12 points on Wednesday, closing at 1,111.76. Total Turnover however fell to Rs.22.46 crore achieved from the trade of 826,013 numbers of shares. 4,302 transactions took place from 169 scripts. Sensitive, Float and Sensitive Float also witnessed a gain of 2.03, 0.72 and 0.67 points respectively.

All sub-indices closed Green on the day. Life Insurance, Non-life Insurance and Hotels made the highest gain of 96.14, 67.56 and 25.44 points respectively. Banking and Microfinance rose by 7.23 and 19.5 points respectively.

KMCDB, CFCL underperformed the most as compared to its sector performance while HATH, RRHP and NCCB outperformed its respective sectors. NADEP, KADBL and RRHP were the most volatile stocks. UMHL and NEF traded at all-time low. SLBBL, CZBIL, NEF are trading closer to 52 weeks low while JEFL is trading near 52 weeks high.

Finance Minister Dr. Yoba Raj Khatiwada expressed at an event on Wednesday that the number of Commercial Banks in the country are more than required and for controlling the interest rates volatilities, the Commercial Banks should be constrained to 8-10, through the Merger approach.

At the other event, Governor Dr. Chiranjibi Nepal stated that the Central Bank has made the favourable working environments for the BFI's and it is time for them to perform.

MAJOR MARKET NEWS

- BPCL to deposit Cash dividend of Rs.18 per share to the shareholders bank account from Thursday; urges shareholders to dematerialise their shares.
- MLBBL has extended the subscription periods of its 50% Right shares till 29th Falgun.
- NLICL to held its 30th AGM on 15th Chaitra; agendas – 13.5% Bonus Shares, increase capital to Rs.4 billion and merge existing 2 promoters group viz. Group A Promoter – Promoter Group and Group B Promoter-Foreign Investors Group into single promoter group.
- ALICL price adjusted for 60% Right Shares, new average base price is Rs. 615.50.
- CFCL to held AGM on 5th Chaitra; 7% Cash dividend



Allotment of Shivam Cement Ltd. IPO

Out of 5,79,640 units issued to the Locals in 2nd Phase at Rs.200, subscription was 0.89 times only. Applicants applying for 15 to 115000 units were allotted fully. Remaining unsubscribed portion was allotted to General Public. For General Public, 44,34,695 units were issued at Rs.300. The issue was 1.17 times oversubscribed. Applicants applying from 50 to 5220 units were fully allotted, 6530 to 1,00,000 units were allotted with 5,640 units each on pro rata basis and 16 applicants applying from 6,530 to 1,00,000 units were allotted 10 and 1 units more on 5,640 allotted shares.

Major Events (Today)

- 17,39,788 units IPO issue of Mountain Hydro Nepal Ltd. -Issue to open till 28th Falgun

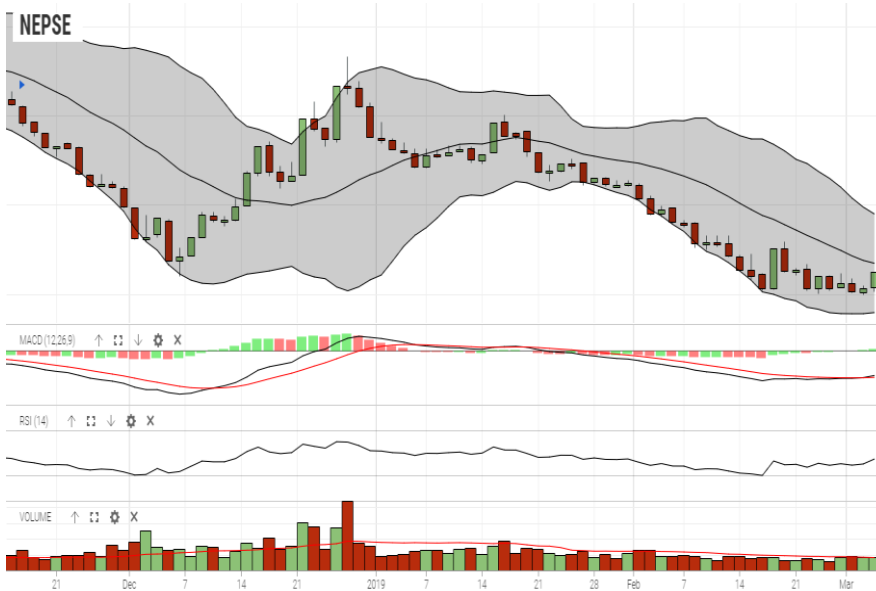
GLOBAL INDICES		
SENSEX	36,636.10	+193.56
NIFTY	11,053.00	+65.55
S&P 500	2,782.76	-6.89
DJIA	25,754.12	-52.51
NIKKEI 225	21,596.81	-129.47

	Scrip Name	Ticker	LTP
UNDER PRICED	Agriculture Development Bank Ltd.	ADBL	292.00
	Nepal Bank Ltd.	NBL	284.00
	Prabhu Bank Limited	PRVU	216.00
	Bank of Kathmandu Ltd.	BOKL	238.00
	Laxmi Bank Limited	LBL	187.00
FAIRLY PRICED	Machhapuchhre Bank Limited	MBL	210.00
	Nabil Bank Limited	NABIL	686.00
	Siddhartha Bank Limited	SBL	279.00
	Prime Commercial Bank Limited	PCBL	308.00
	Kumari Bank Limited	KBL	231.00
OVER PRICED	Standard Chartered Bank Limited	SCB	532.00
	Everest Bank Limited	EBL	514.00
	Nepal Investment Bank Ltd.	NIB	508.00
	Nepal SBI Bank Limited	SBI	373.00
	NIC Asia Bank Ltd.	NICA	385.00

Notes: # Above pricing is performed by averaging the prices derived as per P/E, P/B and 180 days closing averages. Based on Published Q2 75/76 data.

Harmonic Mean of industries is carried for Pricings.

NEPSE TECHNICAL OUTLOOKS



Date / Time	22.11.2075
Close	1,111.76
Open	1,102.93
High	1,111.84
Low	1,100.90
Turnover	224,666,128
Bollinger Bands Top Bollinger Bands (20,2,ma,y)	1,144.76
Bollinger Bands Median Bollinger Bands (20,2,ma,y)	1,117.13
Bollinger Bands Bottom Bollinger Bands (20,2,ma,y)	1,089.49
RSI (14)	42
MA (20, Volume, ma, 0)	201m
MACD (12,26,9)	-14
Signal macd (12,26,9)	-15
macd (12,26,9)_hist	1

Indicators used: Bollinger Bands, MACD, RSI, Moving Average (20 days) Volume



Disclaimers: This MARKET SUMM is prepared to timely update the market participants about the Nepalese stock market before the Market opens for the day. The information and data herein should not be construed as an investment advice or recommendation. Should the investors choose to act based on this report, it shall be entirely at their own risk and KCL Astute shall not be liable, for any loss or damages incurred thereby. Unless otherwise specifically stated, the above data concerns the previous trading day.

KCL Astute Capital Limited

Address: Sundar Bhawan, Hattisar, Kathmandu
Contact No. 977-1-4429149 | 4429150, Email: info@kclastute.com