



MARKET SUMMARY		
NEPSE	1,299.41	+1.70%
Total Turnover (Rs.)	633,653,529	-2.57%
Share Volume	2,075,040	-10.27%
Total Transactions	8,056	-3.09%
Total Market Cap. (Rs. Mill)	1,612,577.13	+1.86%
Floated Market Cap (Rs. Mill)	567,328.62	+1.92%

MARKET CAP TO GDP RATIO	53.62%	▲
-------------------------	--------	---

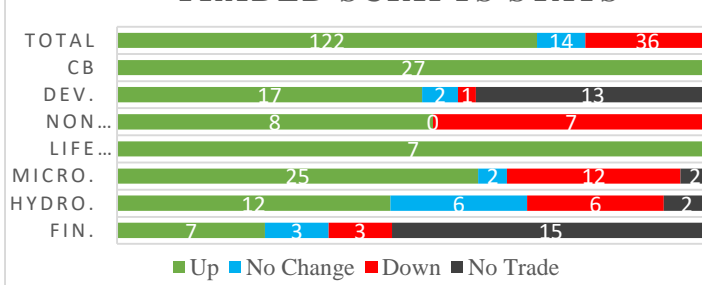
WEIGHTAGE ON MARKET CAP	
Commercial Banks	53.66%
Development Bank	4.92%
Finance	2.93%
Microfinance	6.01%
Life Insurance	8.10%
Non-life Insurance	6.25%
Hydropower	5.50%
Hotel	1.60%
Manufacturing And Processing	3.44%
Trading	0.09%
Others	7.49%
NTC	6.53%

Top Gainers	STC, MPFL, SHIVM
Top Losers	PPCL, MMFDB, UPCL
Top Stocks by Shares Traded	JBNL, SHIVM, NBL
Top Stocks by Transactions	SHIVM, NMB, JBNL
Top Stocks by Turnover	SHIVM, JBNL, NBL
Top Brokers by Turnover	34, 58, 42

NEPSE STATISTICS	
Average Return	17.77%
Standard Deviation	17.22%
Standard Error	1.14%
Skewness	0.45
Kurtosis	3.37

Notes: NEPSE Index from 2069.04.01 – 2076.01.23. Avg. annual trade day's 229. Lognormal return is used. Skewness shows market is asymmetrically skewed to right, indicating average return of 17.77% more affected by outliers. Further excess kurtosis shows fat tail and more peaked distribution than normal.

TRADED SCRIPTS STATS



MARKET OVERVIEW

NEPSE finally closed Monday's trade with a bullish candle after reporting a fall for 4 consecutive days. Market reported a significant gain of 21.73 points closing at 1299.41 on Monday. The highest index reached throughout the day was 1299.41 while the lowest index reached was 1270.06. Turnover, share volume and total transactions all decreased by 2.57%, 10.27% and 3.09% respectively. The trade of 172 scripts resulted in a total turnover of Rs. 63.36 crores. Sensitive, Float and Sensitive Float reported a gain of 5.01, 1.72 and 1.72 points respectively.

Most of the sectors closed green at the end of the day except Others which reported loss of 0.85 points. Sectors to gain the most at the end of the trading day were Life Insurance followed by Manu & Pro. and Banking which reported gain of 75.69, 73.36 and 29.61 points respectively. Microfinance and Non-Life Insurance gained by 10.17 and 4.66 points respectively.

STC and EIC underperformed the most as compared to its sector performance while none of the companies outperformed its respective sectors. EIC, SHIVM and LBL are the most volatile stock that traded throughout the day. KMFL, CORBL, and DHPL are trading closer to 52 weeks low while OHL, HBL and SEF are trading near to 52 weeks high.

STC and MPFL hit positive circuit by gaining 9.78% and 9.70% respectively at the end of the trading day. Whereas, PPCL was the top loser that lost by 6.27%.

MAJOR MARKET NEWS

- NMB has published its financial report for 3rd Quarter 75/76. The net profit of the company has increased by 19.94% on a y-o-y basis. EPS and BVPS stands at Rs. 22.89 and Rs. 174.22 respectively.
- DDBL has published its financial report for 3rd Quarter 75/76. The net profit of the company has increased by 61.79% on a y-o-y basis. EPS and BVPS stands at Rs. 49.52 and Rs. 183.11 respectively.
- SKBBL has published its financial report for 3rd Quarter 75/76. The net profit of the company has increased by 109.64% on a y-o-y basis. EPS and BVPS stands at Rs. 18.42 and Rs. 157.06 respectively.
- The opening range for the first transaction of Sparsha Laghubitta Bittiya Sanstha Ltd. is set at Rs. 100.38 to 301.14.



NBBL has published its financial report for 3rd Quarter 75/76. The net profit of the company has increased by 15.52% on a y-o-y basis. EPS and BVPS stands at Rs. 12.67 and Rs. 139.33 respectively.

Major Events (Today)

- Issue open for 60% and 50% right shares of ALICL, and GLICL.
- MLBBL is selling its unsold 21,642.69 units of unsold right shares via auction. The bids for the auction will be accepted will 27th Baisakh, 2076.

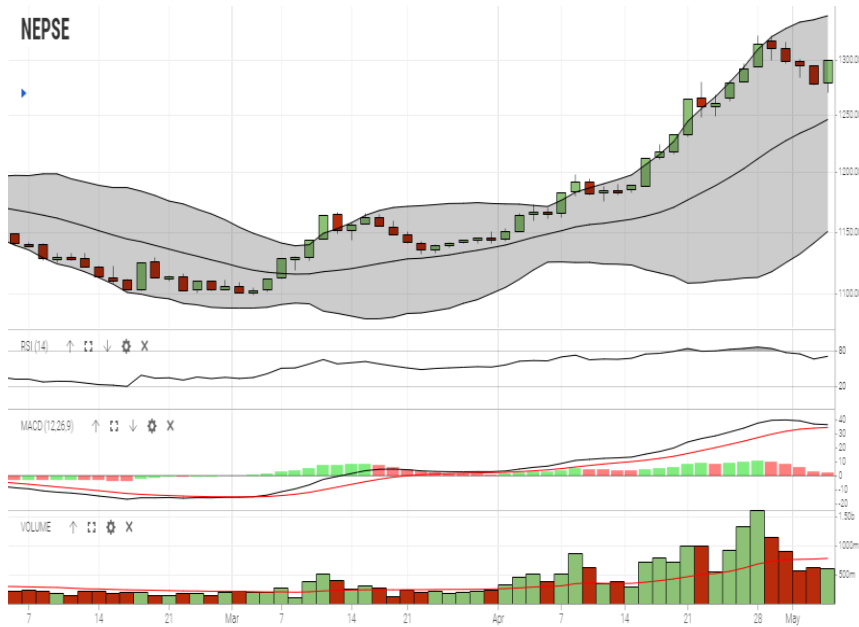
GLOBAL INDICES		
SENSEX	38,600.34	-362.92
NIFTY	11,598.25	-114.00
S&P 500	2,945.64	+28.12
DJIA	26,504.95	+197.16
NIKKEI 225	22,258.73	-48.85

	Scrip Name	Ticker	LTP
UNDER PRICED	Nepal Bank Ltd.	NBL	315.00
	Kumari Bank Ltd.	KBL	229.00
	Civil Bank Ltd.	CBL	155.00
	Agriculture Development Bank Ltd.	ADBL	388.00
	Nepal Credit and Commerce Ltd.	NCCB	238.00
FAIRLY PRICED	Century Commercial Bank Ltd	CCBL	176.00
	Citizen Bank International Ltd.	CZBIL	229.00
	Laxmi Bank Limited	LBL	228.00
	Bank of Kathmandu Ltd.	BOKL	290.00
	Nepal Bangladesh Bank Ltd.	NBB	231.00
OVER PRICED	Standard Chartered Bank Limited	SCB	710.00
	Nepal SBI Bank Limited	SBI	497.00
	Everest Bank Limited	EBL	675.00
	Himalayan Bank Limited	HBL	590.00
	NIC Asia Bank Limited	NICA	496.00

Notes: # Above pricing is performed by averaging the prices derived as per P/E, P/B and 180 days closing averages. Based on Published Q2 75/76 data.

Harmonic Mean of industries is carried for Pricings.

NEPSE TECHNICAL OUTLOOKS



Indicators used: Bollinger Bands, MACD, RSI, Moving Average (20 days) Volume

Date / Time	23.01.2076
Close	1,299.41
Open	1,278.00
High	1,299.41
Low	1,270.06
Turnover	
Bollinger Bands Top Bollinger Bands (20,2,ma,y)	1,341.99
Bollinger Bands Median Bollinger Bands (20,2,ma,y)	1,246.10
Bollinger Bands Bottom Bollinger Bands (20,2,ma,y)	1,150.20
RSI (14)	71
MA (20, Volume, ma, 0)	782m
MACD (12,26,9)	36
Signal macd (12,26,9)	34
macd (12,26,9)_hist	2



Disclaimers: This MARKET SUMM is prepared to timely update the market participants about the Nepalese stock market before the Market opens for the day. The information and data herein should not be construed as an investment advice or recommendation. Should the investors choose to act based on this report, it shall be entirely at their own risk and KCL Astute shall not be liable, for any loss or damages incurred thereby. Unless otherwise specifically stated, the above data concerns the previous trading day.

KCL Astute Capital Limited

Address: Sundar Bhawan, Hattisar, Kathmandu
Contact No. 977-1-4429149 | 4429150, Email: info@kclastute.com