



MARKET SUMMARY		
NEPSE	1,139.57	-0.01%
Total Turnover (Rs.)	257,641,642	9.34%
Share Volume	882,307	18.12%
Total Transactions	6,312	19.03%
Total Market Cap. (Rs. Mill)	N/A	N/A
Floated Market Cap (Rs.Mill)	N/A	N/A

MARKET CAP TO GDP RATIO 46.26% ▼

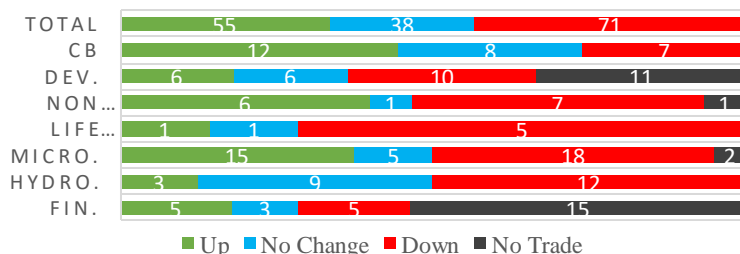
WEIGHTAGE ON MARKET CAP	
Commercial Banks	51.47%
Development Bank	5.21%
Finance	3.47%
Microfinance	6.42%
Life Insurance	8.06%
Non-life Insurance	6.65%
Hydropower	5.80%
Hotel	1.62%
Manufacturing And Processing	2.48%
Trading	0.11%
Others	8.72%
NTC	7.63%

Top Gainers	SLBSL, MERO, JBNL
Top Losers	JOSHI, MSLB, NCDB
Top Stocks by Shares Traded	SHL, UPPER, KSBBLP
Top Stocks by Transactions	SLBSL, UPPER, NICL
Top Stocks by Turnover	NICL, SHL, SLBSL
Top Brokers by Turnover	58, 49, 44

NEPSE STATISTICS	
Average Return	16.45%
Standard Deviation	17.33%
Standard Error	1.15%
Skewness	0.45
Kurtosis	3.41

Notes: NEPSE Index from 2069.04.01 –2075.10.24. Avg. annual trade day's 229. Lognormal return is used. Skewness shows market is asymmetrically skewed to right, indicating average return of 16.45% more affected by outliers. Further excess kurtosis shows fat tail and more peaked distribution than normal.

### TRADED SCRIPTS STATS



### MARKET OVERVIEW

NEPSE closed the weekend with 0.15 point fall on Thursday, putting the Index to 1139.57 level. There was an increment in Market Participants as compared to Wednesday. Turnover increased to Rs.25.76 crores through the trade of 882,307 unit shares from 6,312 Transactions of 164 Companies scripts. Sensitive, Float and Sensitive Float index fell by 0.11, 0.05 and 0.08 points respectively.

Under Sub-Indices, Banking, Hotels, Finance and Microfinance made the meagre gain of 2.25, 2.5, 0.8 and 0.8 points respectively. Rest sub-indices closed Red. Major losers were Life Insurance and Non-Life Insurance that posted loss of 43.57 and 22.48 points each.

MSLB underperformed the most as compared to its sector performance while SLBSL, MERO outperformed. SLBSL, MERO, RADHI were the most volatile stocks. SLBSL traded at all-time high and RRHP, KPCL, JOSHI traded at all-time low. SLBSL, HBL are trading closer to 52 weeks low while JEFL, SLBSL are trading near to 52 weeks high.

Following the NRB relaxation to include interbank lending money in CCD ratio, the weighted average interbank rate is found to have increased to as high as 6.3742%. This is likely to increase the interest rates on lending and borrowing activities of Banks.

### MAJOR MARKET NEWS

- ❑ RBB Q2 Report – Net profit rose by 34.94% to Rs.2.40 billion; EPS Rs.53.53; BVPS Rs.238.20.
- ❑ MEGA Q2 Report – Net profit rose by 85.96% to Rs.73.20 crores; EPS Rs.14.13; BVPS Rs.122.26.
- ❑ CCBL Q2 Report – Net profit rose by 41.37% to Rs.51.98 crores; EPS Rs.12.85; BVPS Rs.120.34.
- ❑ JBNL Q2 Report – Net profit rose by 90.25% to Rs.63.46 crores; EPS Rs.15.87; BVPS Rs.137.98.
- ❑ MLBBL Q2 Report – Net profit rose by 45.94% to Rs.71.33 lakhs; EPS Rs.21.62, BVPS Rs.144.65.
- ❑ Nepal Hydro Developer Ltd. posted a profit of Rs.2.15 crores in the Q2 Report; EPS Rs.8.28, BVPS Rs.112.54.
- ❑ LFC Q2 Report – Reported Net Loss of Rs.3.33 crores; EPS Rs.(14.06), BVPS Rs.53.79.
- ❑ SMB Q2 Report – Net profit rose by 68.05% to Rs.7.18 lakhs; EPS Rs.1.20, BVPS Rs.110.48.



- ☑ Mahalaxmi Life Insurance to come into operation from 27<sup>th</sup> Magh 2075; 19<sup>th</sup> Life Insurance Co.
- ☑ MERO price adjusted for 100% Right Shares

### Major Events (Today)

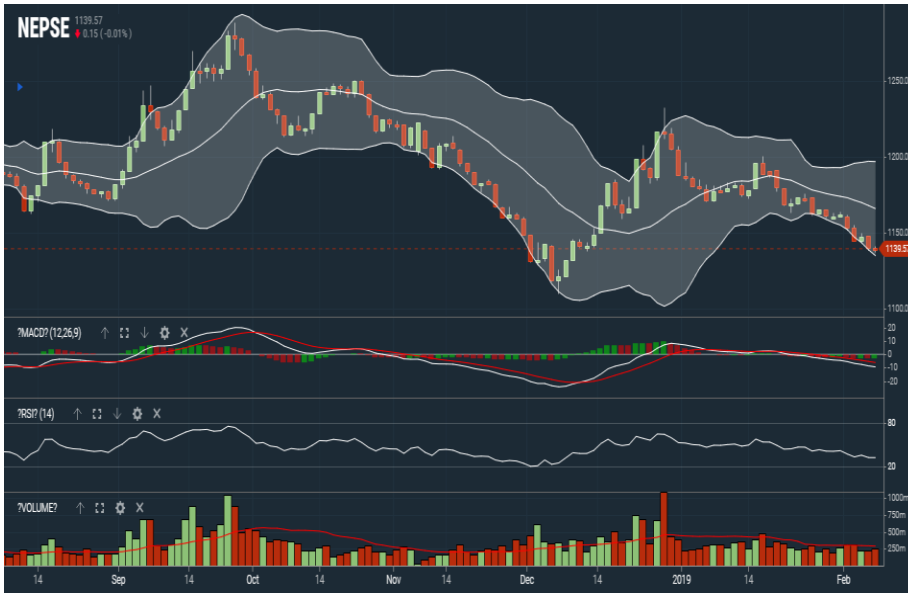
- ☑ **IPO:** Universal Power Company Limited is issuing 9,327,410 units IPO shares to the General Public; Issue to remain open till 29<sup>th</sup> Poush 2075.
- ☑ **IPO Allotment of Asha Laghubitta Bittiya Sanstha Limited will be made today.**

GLOBAL INDICES		
SENSEX	36,749.85	-221.24
NIFTY	11,001.60	-67.80
S&P 500	2,706.05	-25.56
DJIA	25,169.53	-220.77
NIKKEI 225	20,361.00	-390.28

	Scrip Name	Ticker	LTP
UNDER PRICED	Nepal Bank Ltd.	NBL	286.00
	Laxmi Bank Limited	LBL	196.00
	Agriculture Development Bank Ltd.	ADBL	334.00
	Nepal Bangladesh Bank Limited	NBB	186.00
	Janata Bank Nepal Ltd.	JBNL	168.00
FAIRLY PRICED	Kumari Bank Limited	KBL	238.00
	Himalayan Bank Limited	HBL	431.00
	Machhapuchhre Bank Limited	MBL	207.00
	Siddhartha Bank Limited	SBL	281.00
	Century Commercial Bank Ltd.	CCBL	167.00
OVER PRICED	Nabil Bank Limited	NABIL	831.00
	NIC Asia Bank Ltd.	NICA	390.00
	Nepal Investment Bank Limited	NIB	521.00
	Everest Bank Limited	EBL	518.00
	Nepal SBI Bank Limited	SBI	381.00

**Notes:** # Above pricing is performed by averaging the prices derived as per P/E, P/B and 180 days closing averages. Based on 23 CB's Published Q2 75/76 data.  
# Harmonic Mean of industries is carried for Pricings.

### NEPSE TECHNICAL OUTLOOKS



Date / Time	24.10.2075
Close	1,139.57
Open	1,139.77
High	1,141.14
Low	1,137.14
Turnover	257,641,642
Bollinger Bands Top Bollinger Bands (20,2,ma,y)	1,197.09
Bollinger Bands Median Bollinger Bands (20,2,ma,y)	1,166.00
Bollinger Bands Bottom Bollinger Bands (20,2,ma,y)	1,134.98
RSI (14)	33
MA (20, Volume, ma, 0)	291m
MACD (12,26,9)	-9
Signal macd (12,26,9)	-6
macd (12,26,9)_hist	-3

Indicators used: Bollinger Bands, MACD, RSI, Moving Average (20 days) Volume

**Disclaimers:** This MARKET SUMM is prepared to timely update the market participants about the Nepalese stock market before the Market opens for the day. The information and data herein should not be construed as an investment advice or recommendation. Should the investors choose to act based on this report, it shall be entirely at their own risk and KCL Astute shall not be liable, for any loss or damages incurred thereby. Unless otherwise specifically stated, the above data concerns the previous trading day.



### KCL Astute Capital Limited

Address: SundarBhawan, Hattisar, Kathmandu  
 Contact No. 977-1-4429149 | 4429150, Email: info@kclastute.com