



MARKET SUMMARY		
NEPSE	1301.28	+0.14%
Total Turnover (Rs.)	728,828,745	+15.02%
Share Volume	2,520,790	+21.48%
Total Transactions	8,554	+6.18%
Total Market Cap. (Rs. Mill)	1,615,149.43	+0.16%
Floated Market Cap (Rs. Mill)	567,731.98	+0.07%

MARKET CAP TO GDP RATIO	53.70%	▲
-------------------------	--------	---

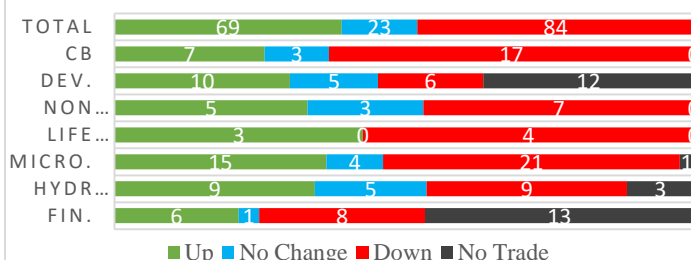
WEIGHTAGE ON MARKET CAP	
Commercial Banks	53.46%
Development Bank	4.92%
Finance	3.00%
Microfinance	6.03%
Life Insurance	8.09%
Non-life Insurance	6.25%
Hydropower	5.50%
Hotel	1.68%
Manufacturing And Processing	3.45%
Trading	0.09%
Others	7.52%
NTC	6.55%

Top Gainers	HDL, OHL, RADHI
Top Losers	PPCL, SMFDB, NHPC
Top Stocks by Shares Traded	NCCB, JBNLPO, NBL
Top Stocks by Transactions	SHIVM, NCCB, UPPER
Top Stocks by Turnover	NCCV, SHIVM, NBL
Top Brokers by Turnover	49, 58, 42

NEPSE STATISTICS	
Average Return	17.79%
Standard Deviation	17.22%
Standard Error	1.14%
Skewness	0.45
Kurtosis	3.37

Notes: NEPSE Index from 2069.04.01 – 2076.01.24. Avg. annual trade day's 229. Lognormal return is used. Skewness shows market is asymmetrically skewed to right, indicating average return of 17.79% more affected by outliers. Further excess kurtosis shows fat tail and more peaked distribution than normal.

TRADED SCRIPTS STATS



MARKET OVERVIEW

NEPSE reported a marginal gain of 1.87 points closing at 1301.28 on Tuesday. The highest index reached throughout the day was 1311.18 while the lowest index reached was 1295.73. Turnover, share volume and total transactions all increased by 15.02%, 21.48% and 6.18% respectively. The trade of 176 scripts resulted in a total turnover of Rs. 72.88 crores. Sensitive, Float and Sensitive Float reported a gain of 0.27, 0.05 and 0.03 points respectively.

Most of the sectors closed green at the end of the day except Banking and Finance which reported loss of 2.56 and 1.93 points respectively. Sectors to gain the most at the end of the trading day were Hotels followed by Manu & Pro. and Others which reported gain of 101.07, 15.81 and 9.47 points respectively. Microfinance and Non-Life Insurance gained by 4.12 and 5.23 points respectively.

PPCL, SMFDB and NHPC underperformed the most as compared to its sector performance while HDL, RADHI, and SINDU outperformed its respective sectors. HDL, SHL and OHL are the most volatile stock that traded throughout the day. DHPL, KMFL and KKHC are trading closer to 52 weeks low while SEF, SHL, and NCCB are trading near to 52 weeks high.

HDL hit positive circuit by gaining 10% at the end of the trading day. Whereas, PPCL hit negative circuit by losing 9.62%.

MAJOR MARKET NEWS

- JBBL has published its financial report for 3rd Quarter 75/76. The net profit of the company has increased by 28.31% on a y-o-y basis. EPS and BVPS stands at Rs. 12.27 and Rs. 120.46 respectively.
- WDBL has published its financial report for 3rd Quarter 75/76. The net profit of the company has increased by 18.91% on a y-o-y basis. EPS and BVPS stands at Rs. 14.61 and Rs. 124.87 respectively.
- EIC has published its financial report for 3rd Quarter 75/76. The net profit of the company has increased by 32.36% on a y-o-y basis. EPS and BVPS stands at Rs. 19.55 and Rs. 230.77 respectively.
- NRB has provided the LOI to the merger and acquisition between WOMI and Nagarik Laghubitta Bittiya Sanstha Ltd.



☑ KRBL has published its financial report for 3rd Quarter 75/76. The net profit of the company has increased by 457.24% on a y-o-y basis. EPS and BVPS stands at Rs. 1.77 and Rs. 110.27 respectively.

Major Events (Today)

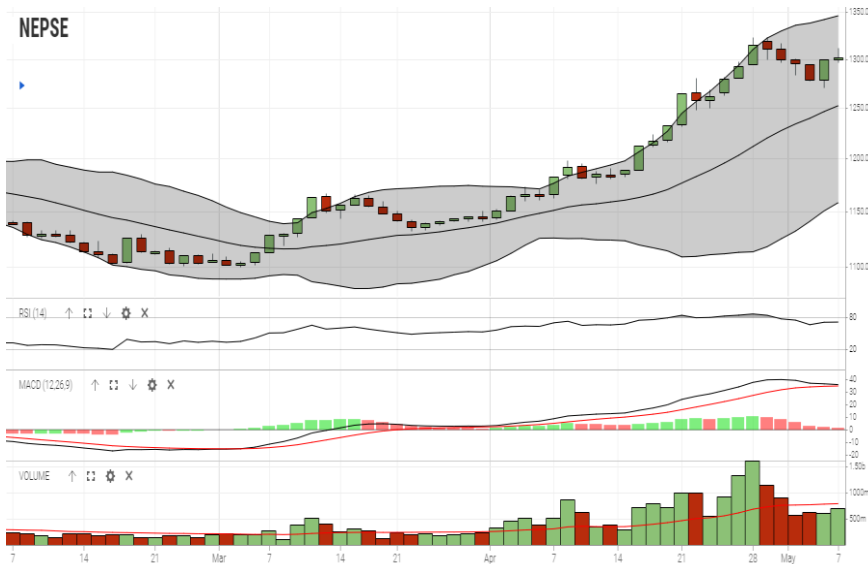
- ☑ Issue open for 60% and 50% right shares of ALICL, and GLICL.
- ☑ MLBBL is selling its unsold 7,664.91 units ordinary shares via auction. The bids for the auction will be accepted till 27th Baisakh, 2076.

GLOBAL INDICES		
SENSEX	38,276.63	-323.71
NIFTY	11,497.90	-100.35
S&P 500	2,932.47	-13.17
DJIA	26,438.48	-66.47
NIKKEI 225	21,902.10	-356.63

	Scrip Name	Ticker	LTP
UNDER PRICED	Nepal Bank Ltd.	NBL	311.00
	Kumari Bank Ltd.	KBL	228.00
	Civil Bank Ltd.	CBL	153.00
	Agriculture Development Bank Ltd.	ADBL	389.00
	Bank of Kathmandu Ltd.	BOKL	283.00
FAIRLY PRICED	Citizen Bank International Ltd.	CZBIL	226.00
	Nepal Credit and Commerce Ltd.	NCCB	247.00
	Century Commercial Bank Ltd	CCBL	179.00
	Mega Bank Nepal Ltd.	MEGA	189.00
	Laxmi Bank Limited	LBL	231.00
OVER PRICED	Standard Chartered Bank Limited	SCB	709.00
	Everest Bank Limited	EBL	675.00
	Himalayan Bank Limited	HBL	588.00
	Nepal SBI Bank Limited	SBI	488.00
	NIC Asia Bank Limited	NICA	494.00

Notes: # Above pricing is performed by averaging the prices derived as per P/E, P/B and 180 days closing averages. Based on Published Q2 75/76 data.
Harmonic Mean of industries is carried for Pricings.

NEPSE TECHNICAL OUTLOOKS



Indicators used: Bollinger Bands, MACD, RSI, Moving Average (20 days) Volume

Date / Time	24.01.2076
Close	1,301.28
Open	1,298.35
High	1,311.18
Low	1,295.73
Turnover	728,828,745
Bollinger Bands Top Bollinger Bands (20,2,ma,y)	1,346.12
Bollinger Bands Median Bollinger Bands (20,2,ma,y)	1,252.04
Bollinger Bands Bottom Bollinger Bands (20,2,ma,y)	1,157.96
RSI (14)	72
MA (20, Volume, ma, 0)	792m
MACD (12,26,9)	36
Signal macd (12,26,9)	35
macd (12,26,9)_hist	1



Disclaimers: This MARKET SUMM is prepared to timely update the market participants about the Nepalese stock market before the Market opens for the day. The information and data herein should not be construed as an investment advice or recommendation. Should the investors choose to act based on this report, it shall be entirely at their own risk and KCL Astute shall not be liable, for any loss or damages incurred thereby. Unless otherwise specifically stated, the above data concerns the previous trading day.

KCL Astute Capital Limited

Address: Sundar Bhawan, Hattisar, Kathmandu
Contact No. 977-1-4429149 | 4429150, Email: info@kclastute.com