



MARKET SUMMARY		
NEPSE	1191.68	+0.79%
Total Turnover (Rs.)	906,936,763	+66.73%
Share Volume	2,951,478	+56.38%
Total Transactions	11,360	+50.82%
Total Market Cap. (Rs. Mill)	1,456,452.28	+0.79%
Floated Market Cap (Rs. Mill)	514,189.13	+0.77%

MARKET CAP TO GDP RATIO	48.43%	▲
-------------------------	--------	---

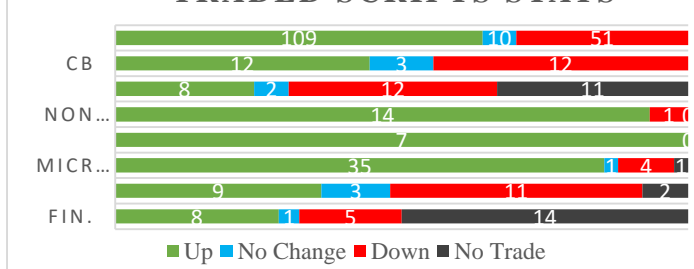
WEIGHTAGE ON MARKET CAP	
Commercial Banks	52.75%
Development Bank	5.05%
Finance	3.25%
Microfinance	6.01%
Life Insurance	7.86%
Non-life Insurance	6.40%
Hydropower	5.59%
Hotel	1.57%
Manufacturing And Processing	3.45%
Trading	0.11%
Others	7.97%
NTC	6.94%

Top Gainers	SMFDB, GIMES1, SLBBL
Top Losers	RADHI, UPCL, RBCLPO
Top Stocks by Shares Traded	NCCB, NICA, NMB
Top Stocks by Transactions	NICA, NMB, UPCL
Top Stocks by Turnover	NICA, NMB, NIB
Top Brokers by Turnover	58, 44, 49

NEPSE STATISTICS	
Average Return	16.70%
Standard Deviation	17.22%
Standard Error	1.14%
Skewness	0.45
Kurtosis	3.43

Notes: NEPSE Index from 2069.04.01 – 2075.12.25. Avg. annual trade day's 229. Lognormal return is used. Skewness shows market is asymmetrically skewed to right, indicating average return of 16.70% more affected by outliers. Further excess kurtosis shows fat tail and more peaked distribution than normal.

### TRADED SCRIPTS STATS



### MARKET OVERVIEW

NEPSE reported a gain of 9.32 points closing at 1191.68. The market has reported gain for 2 consecutive trading days. The highest index reached throughout the day was 1197.88 while the lowest index reached was 1179.43. Turnover, share volume, and total transactions all reported significant gain by 66.73%, 56.38% and 50.82% respectively. The trade of 170 scripts resulted in a total turnover of Rs.90.69 crores. Sensitive, Float and Sensitive Float also reported a gain of 2.02, 0.67 and 0.63 points respectively.

All sectors reported gain in its index except Hotels and Others which reported a loss of 5.5 and 2.56 points respectively. However, Life Insurance followed by Non-Life Insurance and Microfinance were the top gainers which reported gain of 167.5, 153.7 and 36.31 points respectively. Banking and Development Bank closed green by gaining 4.98 and 1.83 points respectively.

UPCL, RADHI and SINDU underperformed the most as compared to its sector performance while SLBBL, HGI, ALICL outperformed its respective sectors. SLBBL, ALBBL, and SICL are the most volatile stock traded throughout the day. MLBBL, UPCL, and JSLBB are trading closer to 52 weeks low while NICA, PRVU and BHBL are trading near to 52 weeks high.

SMFDB and GIMES1 hit positive circuit gaining by 9.84% and 9.80% respectively at the end of the trading day.

### MAJOR MARKET NEWS

- NRB has approved the BOD decision of JEFL to issue 1.24% bonus shares. The proposed bonus of 1.24% is calculated as a percentage of the paid up capital of Rs. 80.90 crores.
- Hathway Finance is conducting its AGM on 26<sup>th</sup> Chaitra, 2075. The special agenda of the AGM is to cancel the proposed 180% issue of right shares. The company is on the verge of being acquired by Global IME Bank.
- World Bank has proposed reduction in the economic growth rate of Nepal for the year 2019. It is expected to reach 6% in the year 2019.
- The IPO of Union Hydropower Company Limited is still undersubscribed by 11.86%.



5 The IPO of Himalaya Urja Bikas Company Ltd is oversubscribed by 3.46 times.

### Major Events (Today)

- 5 Union Hydropower Company Limited is issuing 3,534,340 units IPO shares to general public.
- 5 Progressive Finance Limited calls to place the bids for 667,305 units of ordinary shares.
- 5 Right Share Issue open and 60% of ALICL.
- 5 AGM of HATH.
- 5 Book Closure date for the AGM of SHIVM. The special agenda of the AGM is to issue 15.78% cash dividend to its shareholders.

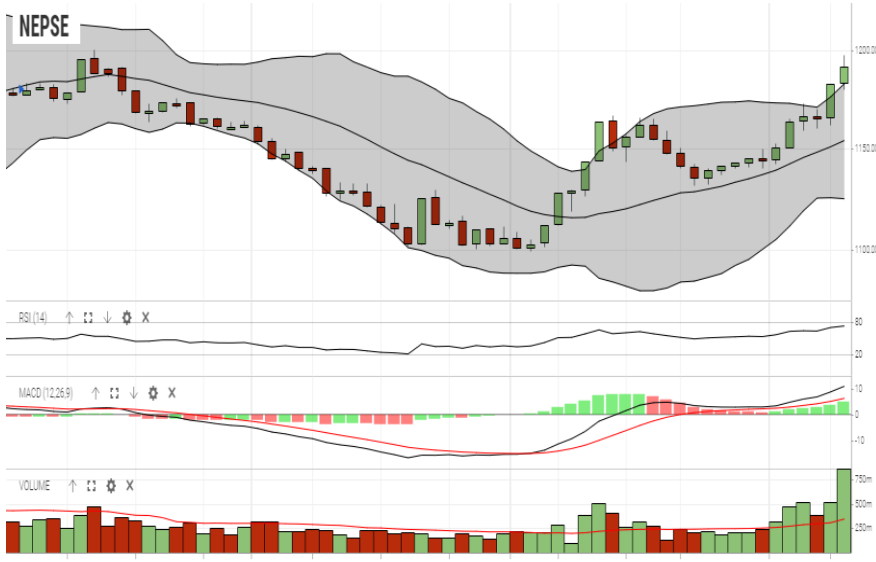
	Scrip Name	Ticker	LTP
UNDER PRICED	Nepal Bank Ltd.	NBL	302.00
	Agriculture Development Bank Ltd.	ADBL	316.00
	Bank of Kathmandu Ltd.	BOKL	261.00
	Mega Bank Nepal Ltd.	MEGA	170.00
	Prabhu Bank Limited	PRVU	251.00
FAIRLY PRICED	Century Commercial Bank Ltd.	CCBL	171.00
	Civil Bank Limited	CBL	161.00
	Global IME Bank Limited	GBIME	276.00
	Citizen Bank International Limited	CZBIL	224.00
	Kumari Bank Limited	KBL	250.00
OVER PRICED	Everest Bank Limited	EBL	608.00
	Standard Chartered Bank Limited	SCB	592.00
	NIC Asia Bank Limited	NICA	466.00
	Nepal SBI Bank Limited	SBI	421.00
	Himalayan Bank Limited	HBL	490.00

Notes: # Above pricing is performed by averaging the prices derived as per P/E, P/B and 180 days closing averages. Based on Published Q2 75/76 data.

# Harmonic Mean of industries is carried for Pricings.

GLOBAL INDICES		
SENSEX	38700.53	-161.70
NIFTY	11,604.50	-61.45
S&P 500	2,895.77	+3.03
DJIA	26,341.01	-83.97
NIKKEI 225	21,765.00	+3.35

### NEPSE TECHNICAL OUTLOOKS



Indicators used: Bollinger Bands, MACD, RSI, Moving Average (20 days) Volume

Date / Time	25.12.2075
Close	1,191.68
Open	1,183.14
High	1,197.88
Low	1,179.43
Turnover	906,936,763
Bollinger Bands Top Bollinger Bands (20,2,ma,y)	1,182.94
Bollinger Bands Median Bollinger Bands (20,2,ma,y)	1,153.92
Bollinger Bands Bottom Bollinger Bands (20,2,ma,y)	1,124.90
RSI (14)	73
MA (20, Volume, ma, 0)	348m
MACD (12,26,9)	11
Signal macd (12,26,9)	6
macd (12,26,9)_hist	5



Disclaimers: This MARKET SUMM is prepared to timely update the market participants about the Nepalese stock market before the Market opens for the day. The information and data herein should not be construed as an investment advice or recommendation. Should the investors choose to act based on this report, it shall be entirely at their own risk and KCL Astute shall not be liable, for any loss or damages incurred thereby. Unless otherwise specifically stated, the above data concerns the previous trading day.

### KCL Astute Capital Limited

Address: Sundar Bhawan, Hattisar, Kathmandu

Contact No. 977-1-4429149 | 4429150, Email: [info@kclastute.com](mailto:info@kclastute.com)