



MARKET SUMMARY		
NEPSE	1,297.60	-0.28%
Total Turnover (Rs.)	507,934,919	-30.31%
Share Volume	1,907,783	-24.32%
Total Transactions	6,765	-20.91%
Total Market Cap. (Rs. Mill)	1,610,586.34	-0.28%
Floated Market Cap (Rs. Mill)	565,372.76	-0.42%

MARKET CAP TO GDP RATIO	53.55%	▼
-------------------------	--------	---

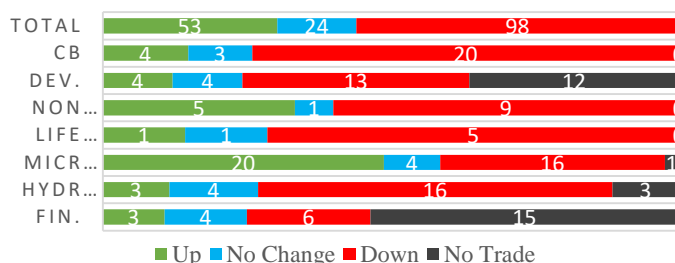
WEIGHTAGE ON MARKET CAP	
Commercial Banks	53.35%
Development Bank	4.91%
Finance	3.06%
Microfinance	6.03%
Life Insurance	8.11%
Non-life Insurance	6.25%
Hydropower	5.43%
Hotel	1.66%
Manufacturing And Processing	3.57%
Trading	0.09%
Others	7.54%
NTC	6.57%

Top Gainers	HDL, NEF, CLBSL
Top Losers	MPFL, TRH, PPCL
Top Stocks by Shares Traded	CBL, MEGA, SHIVM
Top Stocks by Transactions	MEGA, SHIVM, CBL
Top Stocks by Turnover	CBL, MEGA, SHIVM
Top Brokers by Turnover	58, 10, 45

NEPSE STATISTICS	
Average Return	17.73%
Standard Deviation	17.21%
Standard Error	1.14%
Skewness	0.45
Kurtosis	3.38

Notes: NEPSE Index from 2069.04.01 – 2076.01.25. Avg. annual trade day's 229. Lognormal return is used. Skewness shows market is asymmetrically skewed to right, indicating average return of 17.73% more affected by outliers. Further excess kurtosis shows fat tail and more peaked distribution than normal.

### TRADED SCRIPTS STATS



### MARKET OVERVIEW

NEPSE reported a marginal loss of 3.68 points closing at 1297.60 on Wednesday. After the consecutive rise for 2 days, NEPSE closed Wednesday's trade with a bearish candle. The highest index reached throughout the day was 1304.15 while the lowest index reached was 1295.32. Turnover, share volume and total transactions all decreased significantly by 30.31%, 24.32% and 20.91% respectively. The trade of 175 scripts resulted in a total turnover of Rs. 50.79 crores. Sensitive, Float and Sensitive Float reported a loss of 1.17, 0.4 and 0.44 points respectively.

Most of the sectors closed red at the end of the day except Manu & Pro, Others and Trading which reported gain of 69.22, 3.58 and 2.7 points respectively. Sectors to lose the most at the end of the trading day were Hotels followed by Hydropower and Non-Life Insurance which reported loss of 32.99, 17.2 and 14.65 points respectively. Banking and Microfinance lost by 5.83 and 4.95 points respectively.

MPFL, FMDBL, and SINDU underperformed the most as compared to its sector performance while UMHL, NGPL and NCDB outperformed its respective sectors. MLBBL, MPFL, and HDL are the most volatile stock that traded throughout the day. KMFL, KKHC and JSLBB are trading closer to 52 weeks low while BNT, HDL, and NCCB are trading near to 52 weeks high.

HDL hit positive circuit by gaining 10% at the end of the trading day. Whereas, MPFL hit negative circuit by losing 9.55%.

### MAJOR MARKET NEWS

- IPO of Gurans Laghubitta Bittiya Sanstha Ltd is set to be allotted on 26<sup>th</sup> Baisakh, 2076. The issue is oversubscribed by more than 22 times.
- AMFI has published its financial report for 3<sup>rd</sup> Quarter 75/76. The net profit of the company has increased by 290.64% on a y-o-y basis. EPS and BVPS stands at Rs. 12.77 and Rs. 108.62 respectively.
- MLBBL has published its financial report for 3<sup>rd</sup> Quarter 75/76. The net profit of the company has increased by 78.44% on a y-o-y basis. EPS and BVPS stands at Rs. 28.30 and Rs. 159.89 respectively.
- SINDU has published its financial report for 3<sup>rd</sup> Quarter 75/76. The net profit of the company has increased by 98.73% on a y-o-y basis. EPS and



BVPS stands at Rs. 9.61 and Rs. 119.42 respectively.

- MEGA has published its financial report for 3<sup>rd</sup> Quarter 75/76. The net profit of the company has increased by 131.33% on a y-o-y basis. EPS and BVPS stands at Rs. 15.79 and Rs. 126.20 respectively.

### Major Events (Today)

- Issue open for 60% and 50% right shares of ALICL, and GLICL.
- MLBBL is selling its unsold 7,664.91 units ordinary shares via auction. The bids for the auction will be accepted till 27<sup>th</sup> Baisakh, 2076.

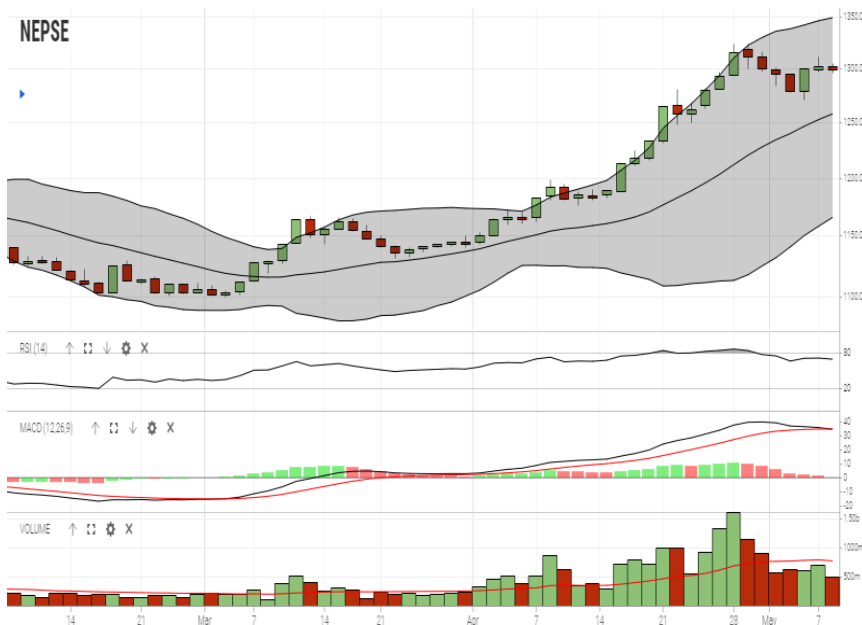
GLOBAL INDICES		
SENSEX	37,789.13	-487.50
NIFTY	11,359.45	-138.45
S&P 500	2,884.05	-48.42
DJIA	25,965.09	-473.39
NIKKEI 225	21,602.59	-321.13

	Scrip Name	Ticker	LTP
UNDER PRICED	Nepal Bank Ltd.	NBL	313.00
	Kumari Bank Ltd.	KBL	225.00
	Civil Bank Ltd.	CBL	152.00
	Agriculture Development Bank Ltd.	ADBL	388.00
FAIRLY PRICED	Bank of Kathmandu Ltd.	BOKL	280.00
	Citizen Bank International Ltd.	CZBIL	225.00
	Century Commercial Bank Ltd	CCBL	177.00
	Laxmi Bank Limited	LBL	227.00
OVER PRICED	Nepal Credit and Commerce Ltd.	NCCB	247.00
	Prabhu Bank Ltd.	PRVU	283.00
	Standard Chartered Bank Limited	SCB	704.00
	Nepal SBI Bank Limited	SBI	492.00
	Everest Bank Limited	EBL	666.00
	Himalayan Bank Limited	HBL	585.00
	NIC Asia Bank Limited	NICA	493.00

Notes: # Above pricing is performed by averaging the prices derived as per P/E, P/B and 180 days closing averages. Based on Published Q2 75/76 data.

# Harmonic Mean of industries is carried for Pricings.

### NEPSE TECHNICAL OUTLOOKS



Date / Time	25.01.2076
Close	1,297.60
Open	1301.39
High	1,304.15
Low	1,295.32
Turnover	507,934,919
Bollinger Bands Top Bollinger Bands (20,2,ma,y)	1,349.13
Bollinger Bands Median Bollinger Bands (20,2,ma,y)	1,257.34
Bollinger Bands Bottom Bollinger Bands (20,2,ma,y)	1,165.55
RSI (14)	70
MA (20, Volume, ma, 0)	773m
MACD (12,26,9)	35
Signal macd (12,26,9)	35
macd (12,26,9)_hist	0

Indicators used: Bollinger Bands, MACD, RSI, Moving Average (20 days) Volume



Disclaimers: This MARKET SUMM is prepared to timely update the market participants about the Nepalese stock market before the Market opens for the day. The information and data herein should not be construed as an investment advice or recommendation. Should the investors choose to act based on this report, it shall be entirely at their own risk and KCL Astute shall not be liable, for any loss or damages incurred thereby. Unless otherwise specifically stated, the above data concerns the previous trading day.

**KCL Astute Capital Limited**

Address: Sundar Bhawan, Hattisar, Kathmandu

Contact No. 977-1-4429149 | 4429150, Email: [info@kclastute.com](mailto:info@kclastute.com)

**KCL ASTUTE CAPITAL RESEARCH TEAM**