



MARKET SUMMARY		
NEPSE	1168.17	-1.24%
Total Turnover (Rs.)	53,23,25,646	26.64%
Share Volume	14,78,724	17.31%
Total Transactions	5,674	54.60%
Total Market Cap. (Rs. Mill)	13,93,896.96	-1.21%
Floated Market Cap (Rs. Mill)	4,84,461.22	-1.40%

MARKET CAP TO GDP RATIO	46.33%
--------------------------------	---------------

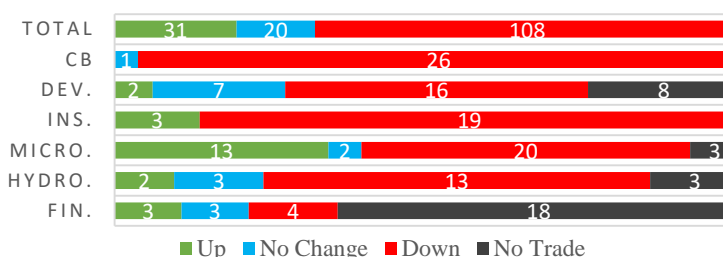
WEIGHTAGE ON MARKET CAP ▼	
Commercial Banks	54.25%
Development Bank	5.21%
Finance	2.63%
Microfinance	5.95%
Insurance	13.86%
Hydropower	4.00%
Hotel	1.65%
Manufacturing And Processing	2.84%
Trading	0.10%
Others	9.50%
NTC	8.44%

Top Gainers	SMFDB, CLBSL, MSMBS
Top Losers	VLBS, RRHP, SLBBL
Top Stocks by Shares Traded	NMB, NCCB, NIB
Top Stocks by Transactions	NMB, NCCB, NIB
Top Stocks by Turnover	NBL, NMB, NCCB
Top Brokers by Turnover	49, 56, 58

NEPSE STATISTICS	
Average Return	17.25%
Standard Deviation	17.43%
Standard Error	1.15%
Skewness	0.43
Kurtosis	3.38

Notes: NEPSE Index from 2069.04.01 –2075.09.03. Avg. annual trade days 229. Lognormal return is used. Skewness shows market is asymmetrically skewed to right, indicating average return of 17.25% more affected by outliers. Further excess kurtosis shows fat tail and more peaked distribution than normal.

TRADED SCRIPTS STATS



MARKET OVERVIEW

The up rally seen in market in recent days stopped as NEPSE fell by 14.61 point on Tuesday to close at 1168.17. However, the day saw the significant rise in turnover, volume and transactions numbers compared to earlier trading days. Turnover crossed half a billions which is really noteworthy. The sensitive index which measure the performance of Group “A” categorized companies posted a 1.21% fall while float and sensitive float index fell by 1.43% and 1.44% respectively.

Except Manu. & Pro. and Others indices, all other Sub-Indices closed Red on the day. Major Losers were Non-life Insurance (3.52% fall), Banking (1.49% fall) and Development Bank (1.42% fall). Manu. & Pro. gained 0.42% while Others gained 0.75%.

VLBS, RRHP and SLBBL underperformed the most as compared to its sector performance while CLBSL, SMFDB, and NUBL performed relatively well. NMBSF1 made positive circuit by trading at new 52 week high level. SHPC, CHL and GUFL are trading at new 52 week low level. WOMI, CFCL and SICL are showing increasing investor participation and NLIC, NIB and CBL have falling participants. LICN and KMCDB has gained for 4 consecutive days and JFL, and HATH have lost for 4 and 3 consecutive days respectively.

MAJOR MARKET NEWS

- ☑ NTC to propose 55% Cash dividend in its AGM
- ☑ Liberty Energy Co. Ltd., *hydropower company*, in process to bring Rs.37.50 crore worth of IPO; NIBL Ace Capital appointed as issue manager.
- ☑ GBIME to propose 16% Bonus share in its AGM on 27th Poush.
- ☑ NBB AGM date on 26th Poush; start subsidiary company as stock broker
- ☑ SMFDB to propose 23.53% Bonus share in its AGM in 27th Poush.
- ☑ Sanima Bank extended the issue date of its 10% Debenture worth Rs.2 billion till 16th Poush due to undersubscriptions.
- ☑ NCCB to auction 7910993 units right shares from 11th Poush till 20th Poush.
- ☑ NMB Bank launch ‘NMB Interest Subsidy Loans’ - brought 8 loan products in its Micro Finance portfolio, of which 7 loans types are Collateral free.



- JEFL to auction 997628 units right shares from 10th Poush till 17th Poush.
- LIC Nepal awarded 'Best Brand Leadership Award, 2018' among life insurance companies

MAJOR EVENTS (On Wednesday)

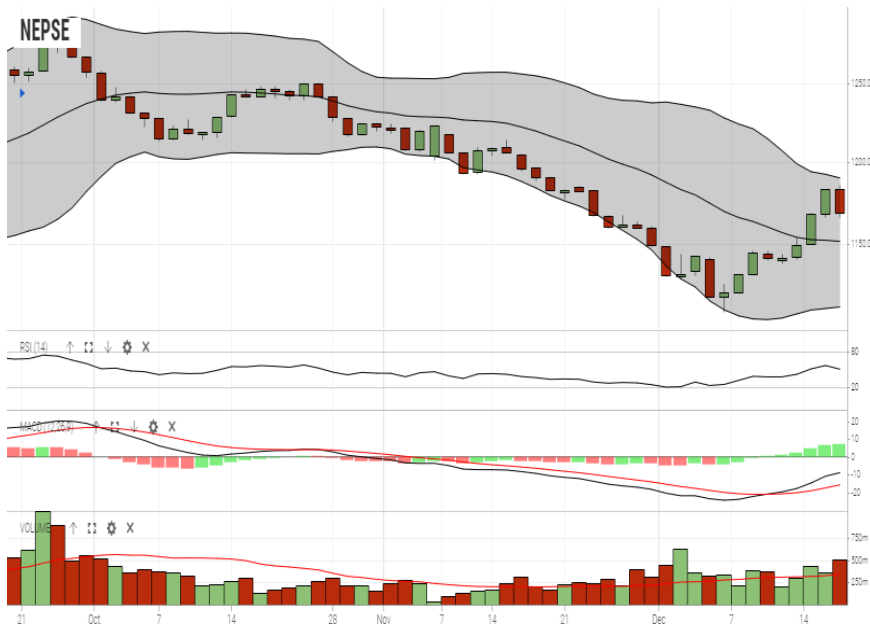
- NIC Asia Bank 21st AGM; 10% Bonus
- Madhya Bhotekoshi to allot 1st phase (for employees of EPF) and 2nd phase (for employees of Provident fund) IPO
- "10.5% SBL Debenture 2082"
- "10% SANIMA Debenture 2085"

GLOBAL INDICES (Real Time)		
SENSEX	36,347.08	+77.01
NIFTY	10,908.70	+20.35
S&P 500	2,567.23	+21.29
DJIA	23,867.18	+274.20
NIKKEI 225	21,115.45	-391.43

TOP 5 SCRIPTS PRICINGS			
	Scrip Name	Ticker	LTP
UNDER PRICED	Nepal Credit And Commercial Bank	NCCB	212.00
	Nepal Bank Ltd.	NBL	306.00
	Prabhu Bank Ltd.	PRVU	248.00
	Janata Bank Nepal Ltd	JBNL	177.00
	Agriculture Development Bank Ltd.	ADBL	344.00
FAIRLY PRICED	Kumari Bank Limited	KBL	249.00
	Civil Bank Ltd	CBL	163.00
	Sunrise Bank Limited	SRBL	220.00
	Laxmi Bank Ltd.	LBL	223.00
	NIC Asia Bank Ltd.	NICA	380.00
OVER PRICED	Standard Chartered Bank Limited	SCB	614.00
	Nabil Bank Ltd.	NABIL	858.00
	Himalayan Bank Limited	HBL	526.00
	Nepal Investment Bank Ltd.	NIB	665.00
	Everest Bank Limited	EBL	536.00

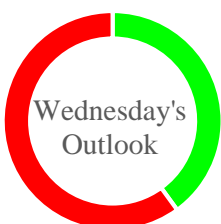
*Notes: # Above pricing is performed by averaging the prices derived as per P/E, P/B and 180 days closing averages.
Harmonic Mean of industries is carried for Pricings.*

NEPSE TECHNICAL OUTLOOKS



Date / Time	03.09.2075
Close	1168.17
Open	1183.12
High	1185.36
Low	1165.59
Turnover	53,23,25,646
Bollinger Bands Top Bollinger Bands (20,2,ma,y)	1190.04
Bollinger Bands Median Bollinger Bands (20,2,ma,y)	1151.43
Bollinger Bands Bottom Bollinger Bands (20,2,ma,y)	1112.82
RSI (14)	51
MA (20, Volume, ma, 0)	342m
MACD (12,26,9)	-9
Signal macd (12,26,9)	-16
macd (12,26,9)_hist	7

Bands, MACD, RSI, Moving Average (20 days) Volume



Disclaimers: This MARKET SUMM is prepared to timely update the market participants about the Nepalese stock market before the Market opens for the day. The information and data herein should not be construed as an investment advice or recommendation. Should the investors choose to act based on this report, it shall be entirely at their own risk and KCL Astute shall not be liable, for any loss or damages incurred thereby. Unless otherwise specifically stated, the above data concerns the previous trading day.

KCL Astute Capital Limited

Address: Sundar Bhawan, Hattisar, Kathmandu
Contact No. 977-1-4429149 | 4429150, Email: info@kclastute.com