



MARKET SUMMARY		
NEPSE	1187.28	-1.43%
Total Turnover (Rs.)	400312385	-11.88%
Share Volume	1179043	-4.63%
Total Transactions	5258	-2.86%
Total Market Cap. (Rs. Mill)	1422073.89	N/A
Floated Market Cap (Rs. Mill)	493318.41	N/A

MARKET CAP TO GDP RATIO	47.28%	▼
-------------------------	--------	---

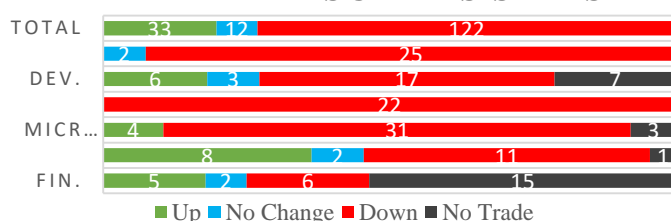
WEIGHTAGE ON MARKET CAP	
Commercial Banks	53.12%
Development Bank	5.20%
Finance	3.00%
Microfinance	6.15%
Insurance	15.03%
Hydropower	4.05%
Hotel	1.59%
Manufacturing And Processing	2.83%
Trading	0.10%
Others	8.93%
NTC	7.74%

Top Gainers	JEFL, SADBL, KPCL
Top Losers	MSMBS, PURBL, HBL
Top Stocks by Shares Traded	NBL, MEGA, NCCB
Top Stocks by Transactions	HIDCL, CZBIL, NLIC
Top Stocks by Turnover	NLIC, NBL, NLIC
Top Brokers by Turnover	44, 34, 45

NEPSE STATISTICS	
Average Return	17.39%
Standard Deviation	17.46%
Standard Error	1.15%
Skewness	0.44
Kurtosis	3.34

Notes: NEPSE Index from 2069.04.01 –2075.09.16. Avg. annual trade days 229. Lognormal return is used. Skewness shows market is asymmetrically skewed to right, indicating average return of 17.39% more affected by outliers. Further excess kurtosis shows fat tail and more peaked distribution than normal.

TRADED SCRIPTS STATS



MARKET OVERVIEW

NEPSE plunged 17.26 points on Monday, closing at 1187.28 level. NEPSE that opened at 1204.68 surged up to 1207.25 on the opening half hour and then made its down journey. There was a minor fall on Turnover, Volumes and Transactions. The sensitive, float and sensitive float index all posted a fall by 1.5%, 1.21% and 1.24% respectively.

Only Manu. & Pro. (7.13 points), Hydro-power (6.95 points) and Finance (1.39 points) posted gain on the day. Remaining other 8 Sub-indices posted loss. Major losing sectors were Non-life insurance (160.23 points), Life insurance (153 points) and Microfinance (23.58 points) respectively. Banking lost 14.94 points on the day.

API and MSLB underperformed the most as compared to its sector performance while JEFL, SADBL performed relatively well. SINDU, SDESI were the most volatile stocks. PCBL, GBIME, NTC are trading closer to 52 weeks high and NHPC, KKHC and SHL are trading near to 52 weeks low level. JEFL, BARUN are up for consecutive 3 days while PICL, TRH and MLBL are down for consecutive 3 days.

MAJOR MARKET NEWS

- 📌 '10% Sanima Debenture 2085' closed; issues not yet fully subscribed.
- 📌 CZBIL to monitor branches of Province 2 through its Provincial office established at Adarshanagar of Birgunj, CZBIL has 8 branches in Province 2.
- 📌 Sabaiko Laghubitta endorsed the proposal to bring IPO through its 2nd AGM.
- 📌 NCCB latest branch situated at Tansen Nagarpalika-14 Argali of Palpa district is in operation.
- 📌 GBIME latest branch situated at Tansen and Purbakhola in Palpa district are in operation.
- 📌 Sunrise Capital Ltd. to propose 20% Cash dividend for its 8th AGM on 28th Poush 2075.
- 📌 Citizen bank facilitate the customers to open bank account from home through its online services.
- 📌 HBL price adjusted for 5% Bonus shares
- 📌 MEGA price adjusted for 1.00233% Bonus shares
- 📌 PURBL price adjusted for 5% Bonus shares
- 📌 MSLB price adjusted for 20% Bonus shares



MAJOR EVENTS (On Tuesday)

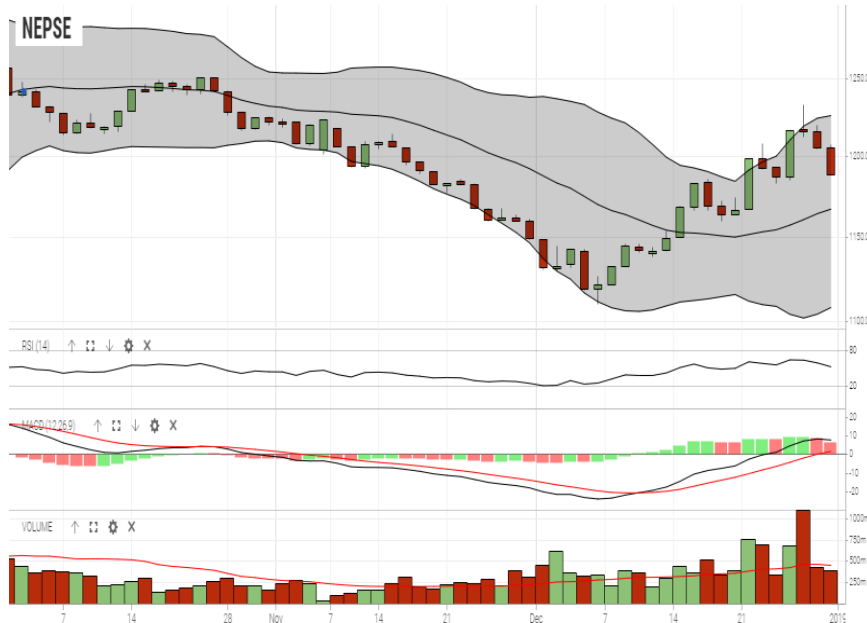
- ☑ Universal Power Company 21,00,350 units IPO Shares to Local
- ☑ Book closure date for 12th AGM of CZBIL
- ☑ Book closure date for 10th AGM of SMFDB
- ☑ Book closure date for 9th AGM of SINDU
- ☑ Book closure date for 7th & 8th AGM of AKPL
- ☑ Book closure date for 14th AGM of SADBL
- ☑ Book closure date for 6th AGM of MSMBS
- ☑ Book closure date for 7th AGM of HIDCL
- ☑ 10.5% SBL Debenture 2082

GLOBAL INDICES		
SENSEX	36,068.33	-8.39
NIFTY	10,862.55	+2.65
S&P 500	2,498.88	+13.14
DJIA	23,259.39	+196.99
NIKKEI 225	20,014.77	-62.85

TOP 5 SCRIPTS PRICINGS			
	Scrip Name	Ticker	LTP
UNDER PRICED	Nepal Credit And Commercial Bank	NCCB	212.00
	Nepal Bank Ltd.	NBL	306.00
	Citizen Bank International Limited	CZBIL	218.00
	Janata Bank Nepal Ltd.	JBNL	173.00
	Nepal Bangladesh Bank Limited	NBB	195.00
FAIRLY PRICED	NIC Asia Bank Ltd.	NICA	377.00
	Civil Bank Ltd	CBL	164.00
	NMB Bank Limited	NMB	328.00
	Laxmi Bank Limited	LBL	225.00
OVER PRICED	Kumari Bank Limited	KBL	246.00
	Standard Chartered Bank Limited	SCB	615.00
	Nabil Bank Ltd.	NABIL	860.00
	Bank of Kathmandu Ltd.	BOKL	332.00
	Nepal SBI Bank Limited	SBI	420.00
	Everest Bank Limited	EBL	539.00

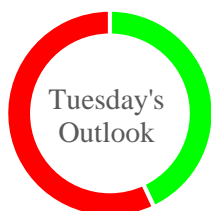
*Notes: # Above pricing is performed by averaging the prices derived as per P/E, P/B and 180 days closing averages.
Harmonic Mean of industries is carried for Pricings.*

NEPSE TECHNICAL OUTLOOKS



Date / Time	16.09.2075
Close	1187.28
Open	1204.68
High	1207.25
Low	1187.28
Turnover	400,312,385
Bollinger Bands Top Bollinger Bands (20,2,ma,y)	1225.64
Bollinger Bands Median Bollinger Bands (20,2,ma,y)	1166.73
Bollinger Bands Bottom Bollinger Bands (20,2,ma,y)	1107.83
RSI (14)	53
MA (20, Volume, ma, 0)	448m
MACD (12,26,9)	8
Signal macd (12,26,9)	2
macd (12,26,9)_hist	6

Indicators used: Bollinger Bands, MACD, RSI, Moving Average (20 days) Volume



Disclaimers: This MARKET SUMM is prepared to timely update the market participants about the Nepalese stock market before the Market opens for the day. The information and data herein should not be construed as an investment advice or recommendation. Should the investors choose to act based on this report, it shall be entirely at their own risk and KCL Astute shall not be liable, for any loss or damages incurred thereby. Unless otherwise specifically stated, the above data concerns the previous trading day.

KCL Astute Capital Limited

Address: Sundar Bhawan, Hattisar, Kathmandu
Contact No. 977-1-4429149 | 4429150, Email: info@kclastute.com