



MARKET SUMMARY		
NEPSE	1215.16	-0.09%
Total Turnover (Rs.)	1,129,969,209	62.23%
Share Volume	2,872,551	50.06%
Total Transactions	10,406	36.31%
Total Market Cap. (Rs. Mill)	1,457,449.43	0.25%
Floated Market Cap (Rs. Mill)	503,813.62	-0.23%

<b>MARKET CAP TO GDP RATIO</b>	<b>48.23%</b>	
--------------------------------	---------------	--

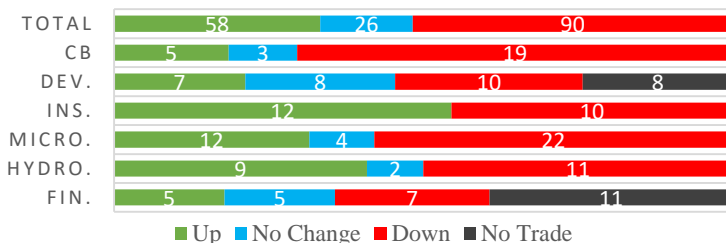
WEIGHTAGE ON MARKET CAP	
Commercial Banks	52.95%
Development Bank	5.17%
Finance	2.91%
Microfinance	6.09%
Insurance	15.09%
Hydropower	3.95%
Hotel	1.57%
Manufacturing And Processing	2.77%
Trading	0.09%
Others	9.41%
NTC	8.24%

<b>Top Gainers</b>	CIT, MSMBS, HDL
<b>Top Losers</b>	SEOS, SRBL, NSEWA
<b>Top Stocks by Shares Traded</b>	NBL, GBIME, NCCB
<b>Top Stocks by Transactions</b>	NLIC, GBIME, NLICL
<b>Top Stocks by Turnover</b>	NLIC, NBL, GBIME
<b>Top Brokers by Turnover</b>	34, 49, 58

NEPSE STATISTICS	
Average Return	17.78%
Standard Deviation	17.45%
Standard Error	1.15%
Skewness	0.44
Kurtosis	3.35

Notes: NEPSE Index from 2069.04.01 –2075.09.12. Avg. annual trade days 229. Lognormal return is used. Skewness shows market is asymmetrically skewed to right, indicating average return of 17.78% more affected by outliers. Further excess kurtosis shows fat tail and more peaked distribution than normal.

## TRADED SCRIPTS STATS



## MARKET OVERVIEW

Market ended the weekend with a meagre fall of 1.08 point, closing at 1215.16. Market opened with rather an optimistic outlook going as high as 1232 level, however it slipped at the last closing hour. The most notable thing however on the day was the Turnover of approx. Rs.1.13 billion. Also there was a significant surge in volumes and transaction numbers. The sensitive, float and sensitive float index all posted a fall by 0.06%, 0.23% and 0.24% respectively.

Only Life-insurance (170.42 points), Manu. & Pro. (19.18 points) and Others (11.46 points) posted gain on the day. And remaining other 8 Sub-indices posted loss. Major losing sectors were Hotels (63.63 points), Non-life insurance (48.67 points) and Banking (6.66 points).

NSEWA, UMHL and SPDL underperformed the most as compared to its sector performance while CIT, AHPC and SMATA performed relatively well. CIT, MSMBS and AHPC were the most volatile stocks. NIB, NIBPO, HIDCL are trading closer to 52 weeks high and AHPC, BARUN, KPCL are trading near to 52 weeks low level.

NRB has amended the Unified Directives 2075, requiring the Development Banks operating in a Province to have a minimum paid up capital of Rs.1.20 billion, National level Finance companies Rs.80 crores and Provincial Finance companies Rs.50 crores. Besides, the Provincial Development banks and Finance companies are directed to either transfer or close the current branches operating outside the working areas by Ashar end.

On the other end, NEPSE has issued a notice detailing the procedure for online trading.

## MAJOR MARKET NEWS

- ☑ “10% NIC ASIA Debenture 2085/86” worth Rs.4 billion added in SEBON pipeline for approval.
- ☑ Mr. Bir Bikram Rayamajhi, CEO of Rastriya Beema Company (RBCL) resigned; to be effective from 20<sup>th</sup> Poush 2075.
- ☑ LVF1 Mangshir end NAV slip to Rs.10.53
- ☑ LEMF Mangshir end NAV slip to Rs.8.27
- ☑ MIDBL price adjusted for 11% Bonus shares
- ☑ KADBL price adjusted for 5% Bonus shares



SEBON approved IPO issuance for Shiva Shree Hydropower Company Ltd.; Local - 14,76,400 unit and 2,214,600 units for the general public and staff.

### MAJOR EVENTS (On Sunday)

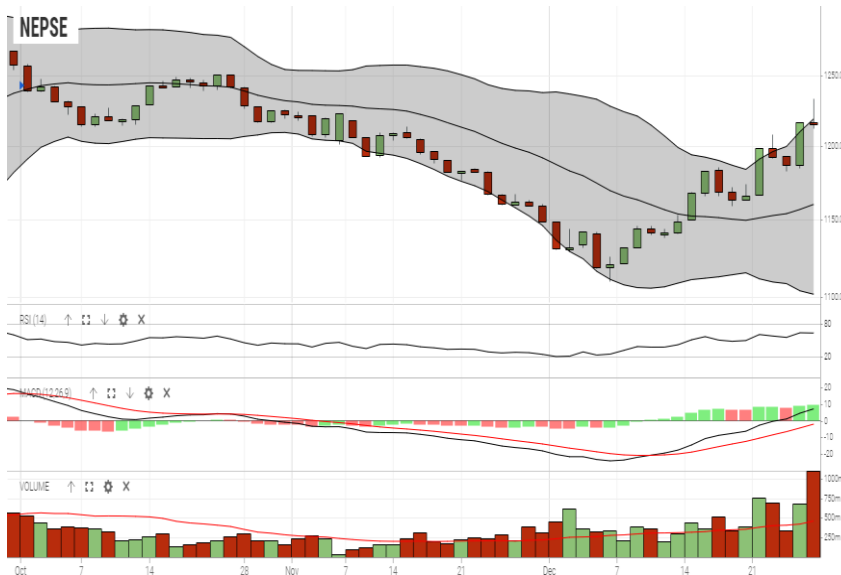
- Universal Power Company issuing 21,00,350 units IPO Shares to local of project affected area of Dolakha District.
- Book closure date for 11<sup>th</sup> AGM of NTC
- Book closure date for 6<sup>th</sup> AGM of FOWAD
- Book closure date for 5<sup>th</sup> AGM of RSDC
- Book closure date for 15<sup>th</sup> AGM of API
- Book closure date for 6<sup>th</sup> AGM of NMBMF
- 10.5% SBL Debenture 2082
- 10% Sanima Debenture 2085

GLOBAL INDICES		
SENSEX	36,076.72	+269.44
NIFTY	10,859.90	+80.10
S&P 500	2,485.74	-3.09
DJIA	23,062.40	-76.42
NIKKEI 225	20,014.77	-62.85

TOP 5 SCRIPTS PRICINGS			
	Scrip Name	Ticker	LTP
UNDER PRICED	Nepal Credit And Commercial Bank	NCCB	216.00
	Nepal Bank Ltd.	NBL	310.00
	Citizen Bank International Limited	CZBIL	221.00
	Prabhu Bank Limited	PRVU	252.00
	Janata Bank Nepal Ltd.	JBNL	180.00
FAIRLY PRICED	NMB Bank Limited	NMB	337.00
	Siddhartha Bank Limited	SBL	302.00
	Sunrise Bank Limited	SRBL	224.00
	Century Commercial Bank Ltd.	CCBL	177.00
	NIC Asia Bank Ltd.	NICA	389.00
OVER PRICED	Standard Chartered Bank Limited	SCB	623.00
	Nabil Bank Ltd.	NABIL	865.00
	Himalayan Bank Limited	HBL	520.00
	Nepal SBI Bank Limited	SBI	427.00
	Bank of Kathmandu Ltd.	BOKL	334.00

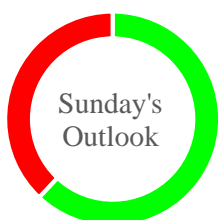
*Notes: # Above pricing is performed by averaging the prices derived as per P/E, P/B and 180 days closing averages.  
# Harmonic Mean of industries is carried for Pricings.*

## NEPSE TECHNICAL OUTLOOKS



Indicators used: Bollinger Bands, MACD, RSI, Moving Average (20 days) Volume

Date / Time	15.09.2075
Close	1215.16
Open	1216.57
High	1232.74
Low	1211.67
Turnover	1,129,969,209
Bollinger Bands Top Bollinger Bands (20,2,ma,y)	1218.88
Bollinger Bands Median Bollinger Bands (20,2,ma,y)	1160.27
Bollinger Bands Bottom Bollinger Bands (20,2,ma,y)	1101.67
RSI (14)	64
MA (20, Volume, ma, 0)	460m
MACD (12,26,9)	7
Signal macd (12,26,9)	-2
macd (12,26,9)_hist	9



*Disclaimers: This MARKET SUMM is prepared to timely update the market participants about the Nepalese stock market before the Market opens for the day. The information and data herein should not be construed as an investment advice or recommendation. Should the investors choose to act based on this report, it shall be entirely at their own risk and KCL Astute shall not be liable, for any loss or damages incurred thereby. Unless otherwise specifically stated, the above data concerns the previous trading day.*

### KCL Astute Capital Limited

Address: Sundar Bhawan, Hattisar, Kathmandu  
Contact No. 977-1-4429149 | 4429150, Email: info@kclastute.com