



| MARKET SUMMARY | | |
|-------------------------------|--------------|---------|
| NEPSE | 1185.91 | -0.11% |
| Total Turnover (Rs.) | 228,543,415 | -42.91% |
| Share Volume | 689,720 | -41.50% |
| Total Transaction | 3,597 | -31.59% |
| Total Market Cap. (Rs. Mill) | 1,419,226.27 | -0.20% |
| Floated Market Cap (Rs. Mill) | 492,450.28 | -0.18% |

| | | |
|-------------------------|--------|---|
| MARKET CAP TO GDP RATIO | 47.25% | ▼ |
|-------------------------|--------|---|

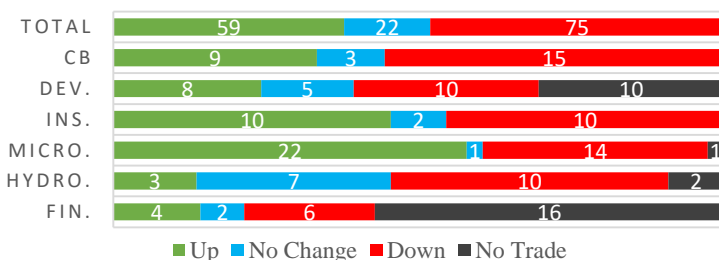
| WEIGHTAGE ON MARKET CAP | |
|------------------------------|--------|
| Commercial Banks | 53.01% |
| Development Bank | 5.22% |
| Finance | 3.03% |
| Microfinance | 6.20% |
| Insurance | 15.06% |
| Hydropower | 4.04% |
| Hotel | 1.59% |
| Manufacturing And Processing | 2.84% |
| Trading | 0.10% |
| Others | 8.93% |
| NTC | 7.75% |

| | |
|-----------------------------|--------------------|
| Top Gainers | KMCDB,MLBBL,NMFBS |
| Top Losers | SADBL, RADHI, PRVU |
| Top Stocks by Shares Traded | NCCB, JEFL, LBBL |
| Top Stocks by Transactions | NLIC, SBI, NMB |
| Top Stocks by Turnover | NLIC, NCCB, ADBL |
| Top Brokers by Turnover | 57, 34, 1 |

| NEPSE STATISTICS | |
|--------------------|--------|
| Average Return | 17.36% |
| Standard Deviation | 17.45% |
| Standard Error | 1.15% |
| Skewness | 0.44 |
| Kurtosis | 3.34 |

Notes: NEPSE Index from 2069.04.01 –2075.09.17. Avg. annual trade days 229. Lognormal return is used. Skewness shows market is asymmetrically skewed to right, indicating average return of 17.36% more affected by outliers. Further excess kurtosis shows fat tail and more peaked distribution than normal.

TRADED SCRIPTS STATS



MARKET OVERVIEW

NEPSE continued its down path with a 1.36 point fall, closing at 1185.91 level. There was a significant drop in Turnover, Volume and Transaction. The sensitive, float and sensitive float index all posted a fall by 0.13%, 0.13% and 0.16% respectively.

Non-life insurance, Microfinance and Life insurance were the only sectors that gained 9.72 points, 3.24 points and 0.63 points on the day. Rest Sub-indices posted loss with a meagre drop in point. Banking lost 2.13 points.

API underperformed the most as compared to its sector performance while KMCDB, JEFL and MLBBL performed relatively well. KMCDB, JEFL and MLBBL were as well the most volatile stocks. AKJCL fell down to Rs.97. PCBL, NIBPO, NTC are trading closer to 52 weeks high and SPDL, NHPC, GRDBL are trading near to 52 weeks low level. PICL, JFL, and OHL is losing for 4 days and JEFL is gaining for 4 days.

Online trading system has now been accompanied by the 'Bank Integration' feature. Investors with account in any of the four clearing member banks – GBIME, NIB, SBL and PRVU can have the clearance of their trade through banks directly.

MAJOR MARKET NEWS

- 4 Mutual Fund Managers - CBIL Capital, NIC ASIA Capital, Laxmi Capital and NMB Capital has been fined by SEBON for failing to comply regulations i.e. investing more than 10% of total fund size in deposit products of BFI's.
- 14 BFI's (i.e. NIB, GBIME, KBL, CCBL, MEGA, NCCB, NBL, SANIMA, RBB, GBBL, MLBL, SBBLJ, MNBBL and UFL) launched 2 Visa Card Loyalty Program – Sunday Funday and Wow Wednesday; Cardholders to receive 15% cash back and gift vouchers of Rs.750 on transactions.
- GBIME brought in operation of its new branch at Gaidakot in Nawalparasi Bardaghat- Susta East
- KSBBL opened 62nd branch in Kalanki, Kathmandu
- "10% Sanima Debenture 2085" got subscribed for only 1,35,737 units by General public out of 4,00,000 units, approx. 66.06% remained unsubscribed.
- Board Meeting of RBCL approved the resignation of CEO Mr. Bir Bikram Rayamajhi.



- 🏢 BPCL purchased 19.4% stake i.e. 601300 units shares in Himtal Hydropower Company Ltd.
- 🏢 CZBIL price adjusted for 3.6% Bonus shares
- 🏢 HIDCL price adjusted for 10% Bonus shares
- 🏢 SADBL price adjusted for 4% Bonus shares
- 🏢 NCDB price adjusted for 1% Bonus shares
- 🏢 SMFDB price adjusted for 23.53% Bonus

MAJOR EVENTS (On Wednesday)

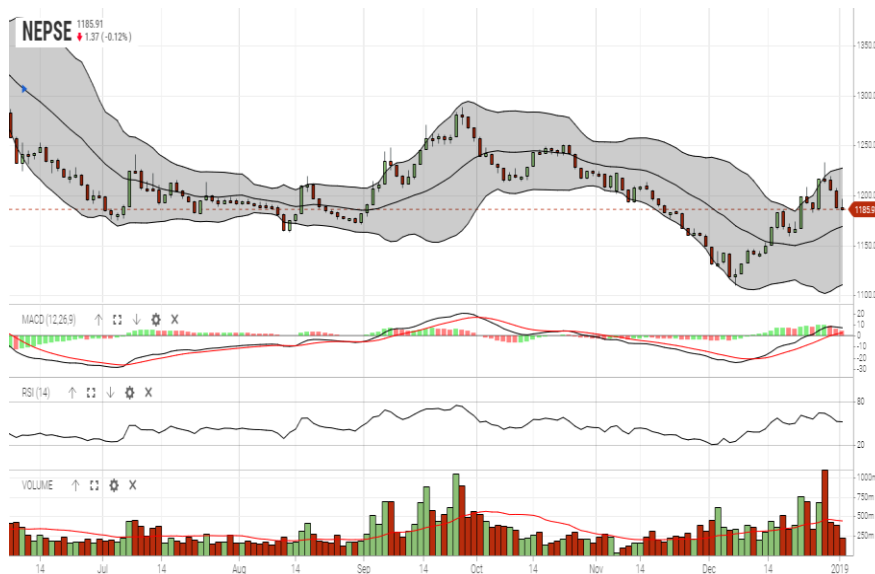
- 🏢 Opening day for Auction of CCBL
- 🏢 Opening day for Auction of NNLB
- 🏢 Book closure date for 25th AGM of SBI
- 🏢 IGI 80% Right shares opened
- 🏢 10.5% SBL Debenture 2082

| GLOBAL INDICES | | |
|----------------|-----------|---------|
| SENSEX | 36,254.57 | +186.24 |
| NIFTY | 10,910.10 | +47.55 |
| S&P 500 | 2,506.85 | +21.11 |
| DJIA | 23,327.46 | +265.06 |
| NIKKEI 225 | 20,014.77 | -62.85 |

| TOP 5 SCRIPTS PRICINGS | | | |
|------------------------|------------------------------------|--------|--------|
| | Scrip Name | Ticker | LTP |
| UNDER PRICED | Nepal Credit And Commercial Bank | NCCB | 213.00 |
| | Nepal Bank Ltd. | NBL | 306.00 |
| | Prabhu Bank Limited | PRVU | 246.00 |
| | Janata Bank Nepal Ltd. | JBNL | 173.00 |
| | Citizen Bank International Limited | CZBIL | 212.00 |
| FAIRLY PRICED | Sunrise Bank Limited | SRBL | 217.00 |
| | Kumari Bank Limited | KBL | 246.00 |
| | Civil Bank Ltd | CBL | 162.00 |
| | NMB Bank Limited | NMB | 325.00 |
| | Century Commercial Bank Ltd. | CCBL | 172.00 |
| OVER PRICED | Standard Chartered Bank Limited | SCB | 621.00 |
| | Nabil Bank Ltd. | NABIL | 851.00 |
| | Nepal SBI Bank Limited | SBI | 424.00 |
| | Everest Bank Limited | EBL | 538.00 |
| | Himalayan Bank Limited | HBL | 475.00 |

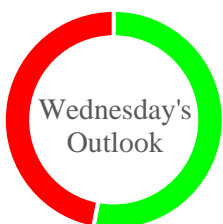
*Notes: # Above pricing is performed by averaging the prices derived as per P/E, P/B and 180 days closing averages.
Harmonic Mean of industries is carried for Pricings.*

NEPSE TECHNICAL OUTLOOKS



| Date / Time | 17.09.2075 |
|--|-------------|
| Close | 1185.91 |
| Open | 1187.30 |
| High | 1196.18 |
| Low | 1183.84 |
| Turnover | 228,543,415 |
| Bollinger Bands Top Bollinger Bands (20,2,ma,y) | 1227.27 |
| Bollinger Bands Median Bollinger Bands (20,2,ma,y) | 1168.92 |
| Bollinger Bands Bottom Bollinger Bands (20,2,ma,y) | 1110.57 |
| RSI (14) | 53 |
| MA (20, Volume, ma, 0) | 441m |
| MACD (12,26,9) | 7 |
| Signal macd (12,26,9) | 3 |
| macd (12,26,9)_hist | 4 |

Indicators used: Bollinger Bands, MACD, RSI, Moving Average (20 days) Volume



Disclaimers: This MARKET SUMM is prepared to timely update the market participants about the Nepalese stock market before the Market opens for the day. The information and data herein should not be construed as an investment advice or recommendation. Should the investors choose to act based on this report, it shall be entirely at their own risk and KCL Astute shall not be liable, for any loss or damages incurred thereby. Unless otherwise specifically stated, the above data concerns the previous trading day.

KCL Astute Capital Limited

Address: Sundar Bhawan, Hattisar, Kathmandu

Contact No. 977-1-4429149 | 4429150, Email: info@kclastute.com

KCL ASTUTE CAPITAL RESEARCH TEAM