



NEPSE Index – Sunday



MARKET SUMMARY

NEPSE	1,209.62	-0.28%
Total Turnover (Rs.)	350,269,509	+33.86%
Share Volume	1,275,623	+18.36%
Total Transactions	6,631	+5.62%
Total Market Cap. (Rs. Mill)	1,535,953.73	-0.25%
Floated Market Cap (Rs.Mill)	551,704.34	-0.35%

MARKET CAP TO GDP RATIO **51.07%** ▼

WEIGHTAGE ON MARKET CAP

Commercial Banks	52.62%
Development Bank	5.26%
Finance	2.93%
Microfinance	6.40%
Life Insurance	7.19%
Non-life Insurance	5.38%
Hydropower	6.63%
Hotel	1.74%
Manufacturing And Processing	4.10%
Trading	0.10%
Others	7.64%
NTC	6.59%

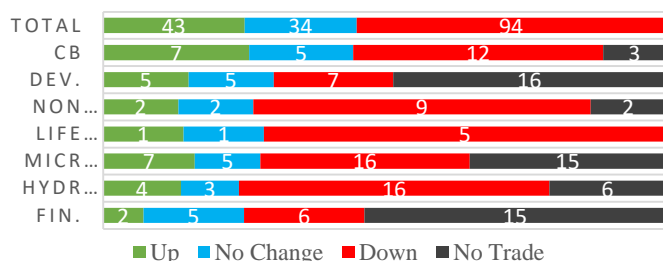
Top Gainers	SFFIL, SMB, SINDU
Top Losers	PPCL, UPCL, IGI
Top Stocks by Shares Traded	NBL, CBBLPO, RHPL
Top Stocks by Transactions	RHPL, SJCL, UPPER
Top Stocks by Turnover	CBBLPO, NBL, NLICL
Top Brokers by Transactions	44, 34, 33

NEPSE STATISTICS

Average Return	15.91%
Standard Deviation	16.92%
Skewness	0.47
Kurtosis	3.55

Notes: NEPSE Index from 2069.04.01 – 2076.05.08. Avg. annual trade day's 229. Lognormal return is used. Skewness shows market is asymmetrically skewed to right, indicating average return of 15.91% more affected by outliers. Further excess kurtosis shows fat tail and more peaked distribution than normal.

TRADED SCRIPTS STATS



MAJOR MARKET NEWS

- Market opened the week's trade with Red candle on Sunday. Market reported a marginal loss of 3.45 points and NEPSE closed at 1209.62 level.
- Sensitive, Float and Sensitive Float Index lost by 0.27, 0.34 and 0.22 points respectively.
- CIT is calling its shareholders to attend 24th AGM on 30th Bhadra. The main agenda of the AGM is to issue 22% bonus shares. Book Closure date for the same is set at 18th Bhadra.
- The 131st BOD meet of SLBS has proposed 44.47% bonus shares to its shareholders for the FY 2075/76.
- The 156th BOD meet of MMDBL has proposed 45% bonus shares to its shareholders for the FY 2075/76. The company is on the verge of merger with Nagbeli Laghubbita and Kisan Laghubbita.
- The 192nd BOD meet of SLBBL has proposed 26.752% bonus shares to its shareholders for the FY 2075/76.
- 50% right shares of GLICL is listed on NEPSE for trading. 1,650,000 units IPO shares of Sabaiko Laghubitta Bittiya Sanstha Limited is listed on NEPSE.
- 1,000,000 units IPO shares of Adhikhola Laghubitta Bittiya Sanstha Limited is listed in NEPSE for trading.
- SFFIL is issuing 60% right shares to its existing shareholders. Book Closure for the same is set on 20th Bhadra.
- ICFC is issuing 12% Debentures of 2 lakh units for a period of 7 years.

Today's Events

- Auction Alert:** CBL is selling its 1,282,881 units promoter shares via auction. Issue open till 16th Bhadra
- Right Shares Alert:** SLICL is issuing 70% right shares to its shareholders. Issue open till 12th Ashwin.
- Debentures Alert:** SBL is issuing 10.25% 25 lakh units debentures. Issue open till 9th Bhadra.
- Right Shares Alert:** GILB is issuing 100% right shares to its shareholders. Issue open till 23rd Bhadra.
- Right Shares Alert:** WOMI is issuing 100% right shares to its shareholders. Issue open till 11th Bhadra.
- Right Shares Alert:** MPFL is issuing 865% right shares to its shareholders. Issue open till 9th Bhadra.
- Right Shares Alert:** UIC is issuing 240% right shares to its shareholders from today. Issue open till 6th Ashwin.
- NFO Alert:** NMB 50 worth Rs.1.20 billion (120 million units at Rs.10 each). *Issue date extended.*

Fundamental Watch: Quarter 4 2075/76 Unaudited Reports

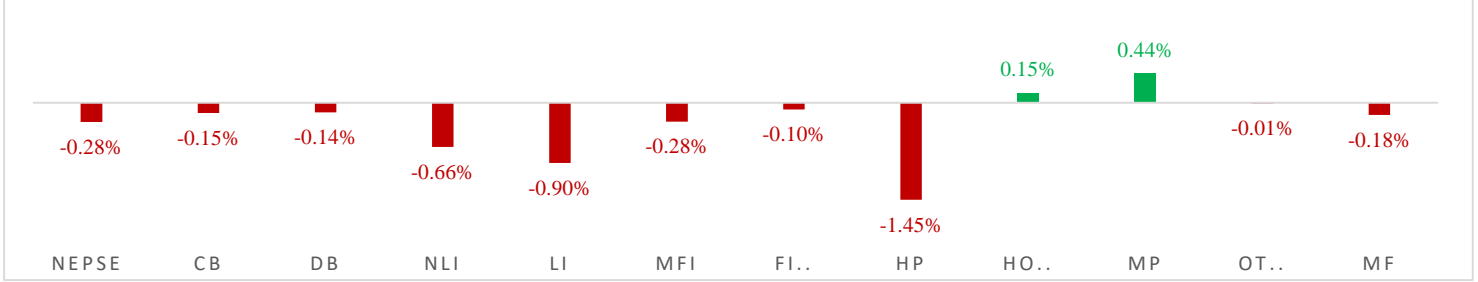


MARKET SUMM...



9th Bhadra, 2076 Monday

INDICES % CHANGE



Volatile Stocks

CLBSL	(535)	7.92%
PPCL	(103)	7.92%
DHPL	(58)	7.14%

Stock Movement

GHL	(78)	Lowest till now
NHDL	(112)	Lowest till now
PROFL	(97)	Lowest till now

Highest Volume – Day 1 (Week 7)

SEF	(8.82)	128,800 units
NBL	(322)	75,110 units
CBBLPO	(481)	66,800 units

Sectorial Outlooks

Bullish	Bearish
-	Banking
-	Non-Life Insurance

Stock Pick...

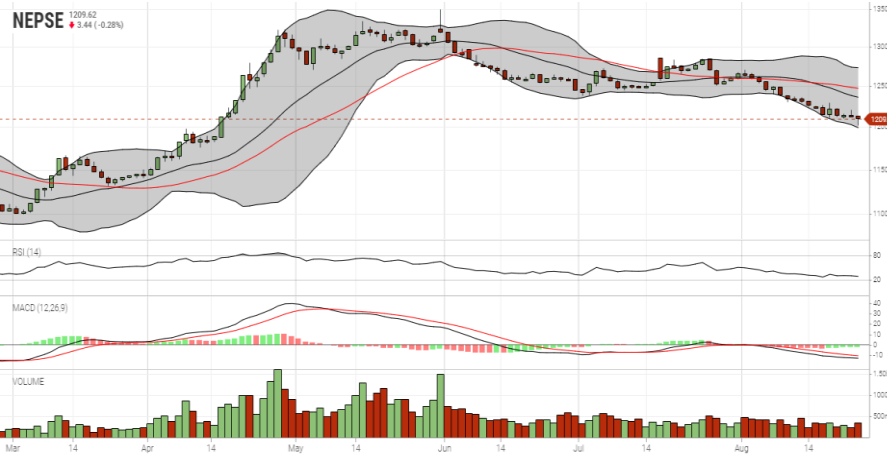
Up Pick	Down Pick
CLBSL	IGI
SLBSL	SIC

Financial Metrics

S.N.	Ticker	LTP	EPS	BVPS	P/E	P/B	ROE	NPL	CAR	Remarks
1	SICL	767	44.73	250.17	17.15	3.07	19.64%	-	-	-
1	SIC	588	27.62	191.17	21.29	3.08	15.57%	-	-	-
2	JSLBB	975	73.73	327.01	13.22	2.98	26.99%	2.23%	8.37%	-
3	NIL	398	29.22	195.90	13.62	2.03	16.12%	-	-	-
5	BFC	93	9.92	87.53	9.38	1.06	17.56%	18.46%	17.17%	-

Note: If asterisk sign (*) financial metrics denotes Quarter 3 75/76 data, otherwise financial metrics are of Quarter 4 75/76 data.

NEPSE TECHNICAL OUTLOOKS



Date / Time	08.05.2076
Close	1209.62
Open	1212.76
High	1213.24
Low	1201.71
Bollinger Bands Top (20,2,ma,y)	1273.55
Bollinger Bands Median (20,2,ma,y)	1236.40
Bollinger Bands Bottom (20,2,ma,y)	1199.26
RSI (14)	29
MA (35, ma, 0)	1247.36
MACD (12,26,9)	29
Signal macd (12,26,9)	-13
macd (12,26,9)_hist	-11

Indicators used: Bollinger Bands, MACD, RSI, Moving Average (35 days) Volume

Global Indices	SENSEX	NIFTY	S&P 500	DJIA	NIKKEI 225
	36,701.16 (+0.63%)	10,829.35 (+0.82%)	2,847.11 (-2.59%)	25,628.90 (-2.37%)	20,710.91 (+0.40%)



Disclaimers: This MARKET SUMM is prepared to timely update the market participants about the Nepalese stock market before the Market opens for the day. The information and data herein should not be construed as an investment advice or recommendation. Should the investors choose to act based on this report, it shall be entirely at their own risk and KCL Astute shall not be liable, for any loss or damages incurred thereby. Unless otherwise specifically stated, the above data concerns the previous trading day.

KCL Astute Capital Limited

Address: Sundar Bhawan, Hattisar, Kathmandu

Contact No. 977-1-4429149 | 4429150

Email: info@kclastute.com

KCL ASTUTE CAPITAL RESEARCH TEAM